

# Platinum CI Stucco

## Guidelines for Attaching to Wood or Steel Framed Wall/Sheathing Assemblies

### INTRODUCTION

Construction trends and recent Building Codes are driving increased use and thicknesses of continuous insulation (CI) behind all types of above grade exterior wall claddings, including stucco. The added thickness of CI may require changes in the fastener types and mechanisms commonly used to fasten lath in stucco systems.

This bulletin can be used as a guideline for attachment of Platinum CI Stucco systems. Below is the procedure as well as an example for choosing a mechanical fastening system.

### FASTENER SELECTION PROCEDURE

Refer to Table 1 and determine applicable fastener based on the following:

1. Framing material, gauge (if steel) and spacing
2. CI thickness
3. Determine appropriate fastener length based on total combined thickness of sheathing, continuous insulation and minimum required penetration into framing

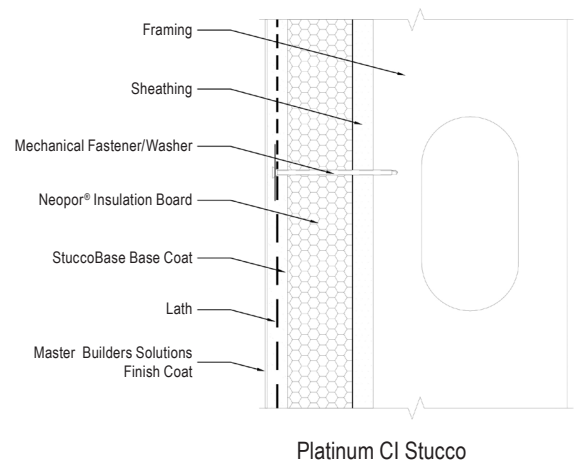


Table 1 – Mechanical Fastener Selection Guidelines

FRAMING MATERIAL	LATH FASTENER TYPE AND DIAMETER	LATH FASTENER SPACING (VERTICAL IN INCHES)	MAXIMUM CI THICKNESS (INCHES)	
			16" O.C. FRAMING/ HORIZONTAL FASTENER SPACING	24" O.C. FRAMING/ HORIZONTAL FASTENER SPACING
Wood Framing (minimum 1-1/4" penetration)	0.113" diameter common nail	6"	1"	3/4"
	0.120" diameter comon nail	6"	1"	3/4"
	0.131" diameter common nail	6"	2"	1"
Steel Framing (minimum 3/8" penetration)	#8 screw into 33 mil steel or thicker (20 ga)	6"	3"	2"
	#10 screw into 33 mil steel (20 ga)	6"	3"	3"
	#10 screw into 43 mil steel or thicker (17 ga)	6"	4"	4"

#### FASTENER SELECTION - EXAMPLE

##### Proposed Assembly

Framing Material:	Steel
Sheathing thickness:	5/8"
CI Insulation Thickness:	2-1/2"
Framing gauge	33 mil
Framing Spacing:	16" on center
3/4" Stuccobase	nominal weight 9 psf

##### Mechanical Fastener/Washer

Select a minimum 3-1/2" long (5/8" sheathing + 2-1/2" CI insulation + minimum 3/8" penetration (per ASTM C 1063) = 3-1/2") #8 screw or #10 screw and corresponding washer

---

#### NOTES

- Table based on cladding weight of 11 PSF
- Fastener Data derived from Guide to Attaching Exterior Wall Coverings through Foam Sheathing to Wood or Steel Framing, Table 1a, Siding Minimum Fastening Requirements for Direct Cladding Attachments over Foam Plastic Sheathing to Support Cladding System Weight (<http://fsc.americanchemistry.com/Building-Code/Installation-of-Cladding/Guide-to-Attaching-Exterior-Wall-Coverings.pdf>)
- All fasteners shall be corrosion resistant and be used with approved washers
- Guidelines and recommendations take into account vertical load based on stucco weight, CI thickness, etc. Verification of fastening requirements is needed to accommodate wind pressures, racking, etc.
- Contact Technical Services for other thicknesses and applications

For the most current version of this literature, please visit our website at [www.master-builders-solutions.com/en-us](http://www.master-builders-solutions.com/en-us).