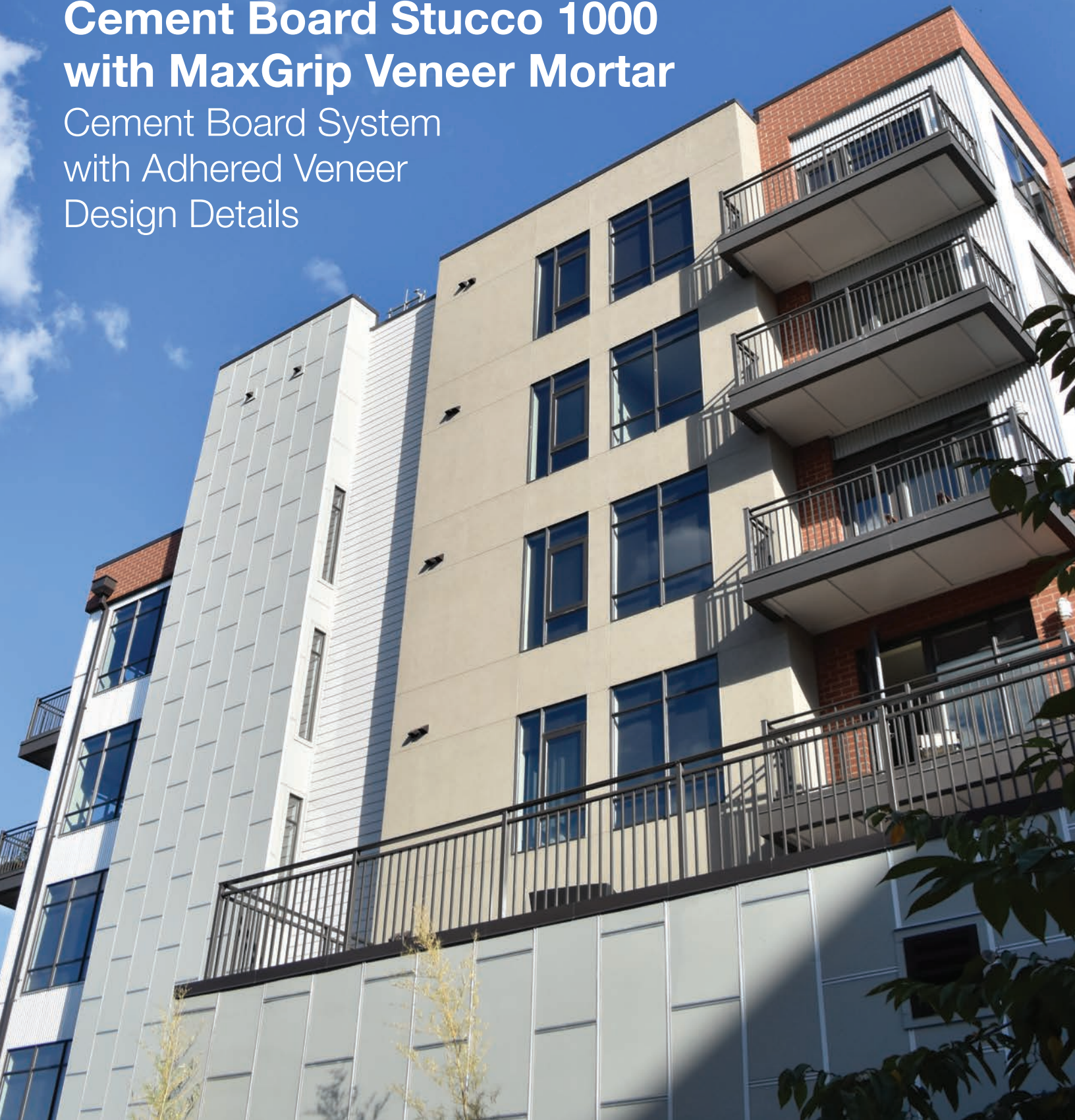


**■ - BASF**  
We create chemistry

***Senergy***<sup>®</sup>

# Cement Board Stucco 1000 with MaxGrip Veneer Mortar

Cement Board System  
with Adhered Veneer  
Design Details



# Cement Board Stucco 1000 with MaxGrip Veneer Mortar

## Design Details

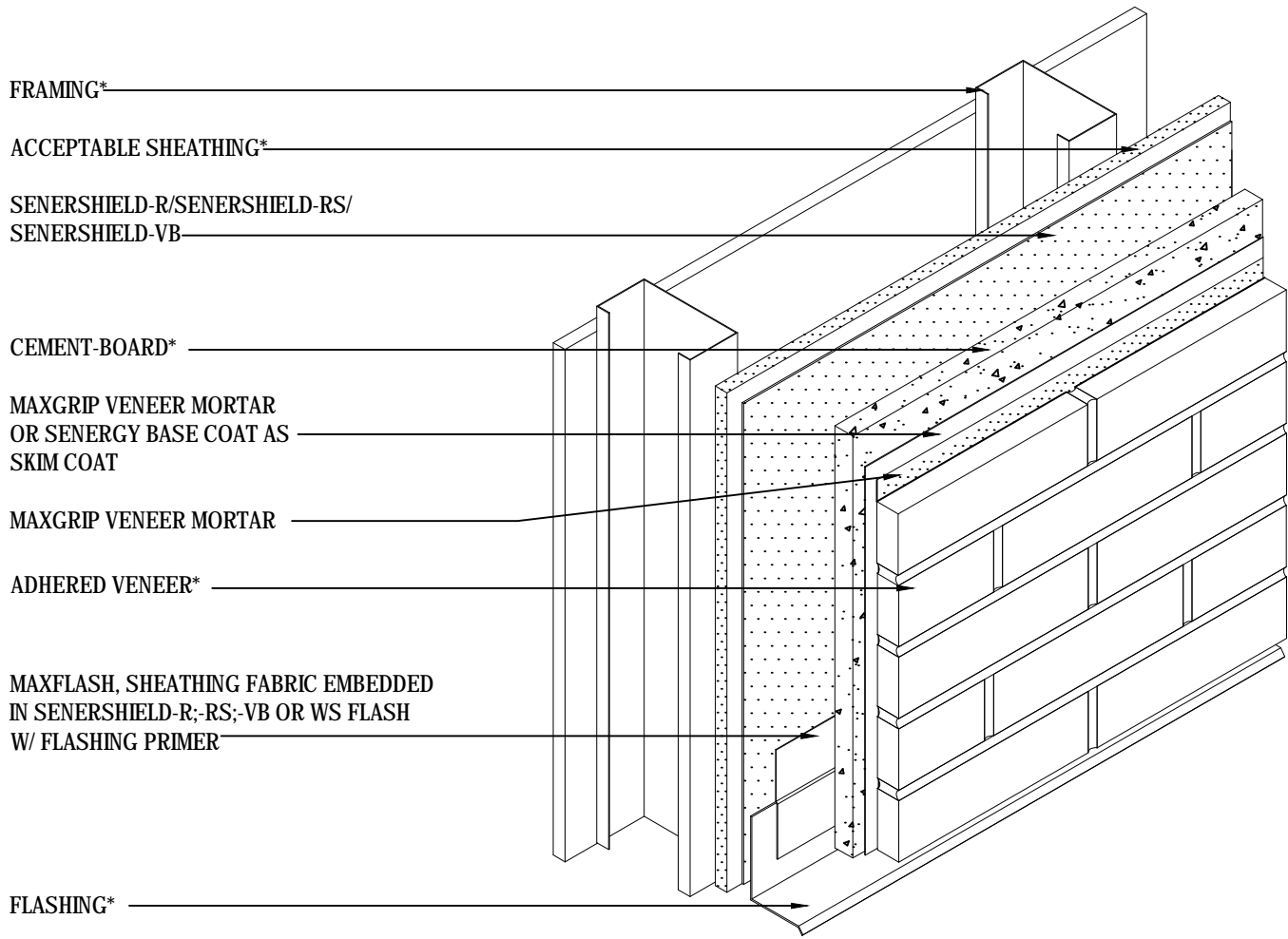
### Cement Board System with Adhered Veneer

#### Table of Contents

- 1 Isometric View
- 2 Typical Termination at Foundation
- 3 Typical EIFS Abutment to Adhered Veneer
- 4 Typical Outside Corner Application
- 5 Typical Inside Corner
- 6 Typical Window Jamb (Flush)
- 7 Typical Window Head (Flush)
- 8 Typical Window Sill Detail (Flush)
- 9 Typical Roof Edge Flashing Detail
- 10 Typical Column Base Termination
- 11 Typical Light Fixture
- 12 Typical Pipe Penetration Typical
- 13 Typical Termination at Dissimilar Material  
(Plan View)

#### Notes:

- **Unsatisfactory conditions shall be reported to the General Contractor and corrected before the application of BASF products.**
- **Install BASF materials in accordance with current installation instructions.**
- **The details within represent BASF Corporation - Wall Systems (hereinafter BASF Wall Systems) latest recommendations. They are presented in good faith by BASF Wall Systems. The details are subject to change without notice. BASF Wall Systems accepts no liability for the end use of the details. For conditions not shown, consult BASF Wall Systems for review of specific detail.**



\*BY OTHERS

NOTE: Cement board joints are treated with Senergy reinforcing mesh and base coat prior to skim coat application per CBS 1000 with MaxGrip Veneer Mortar instructions

## TYPICAL ISOMETRIC VIEW

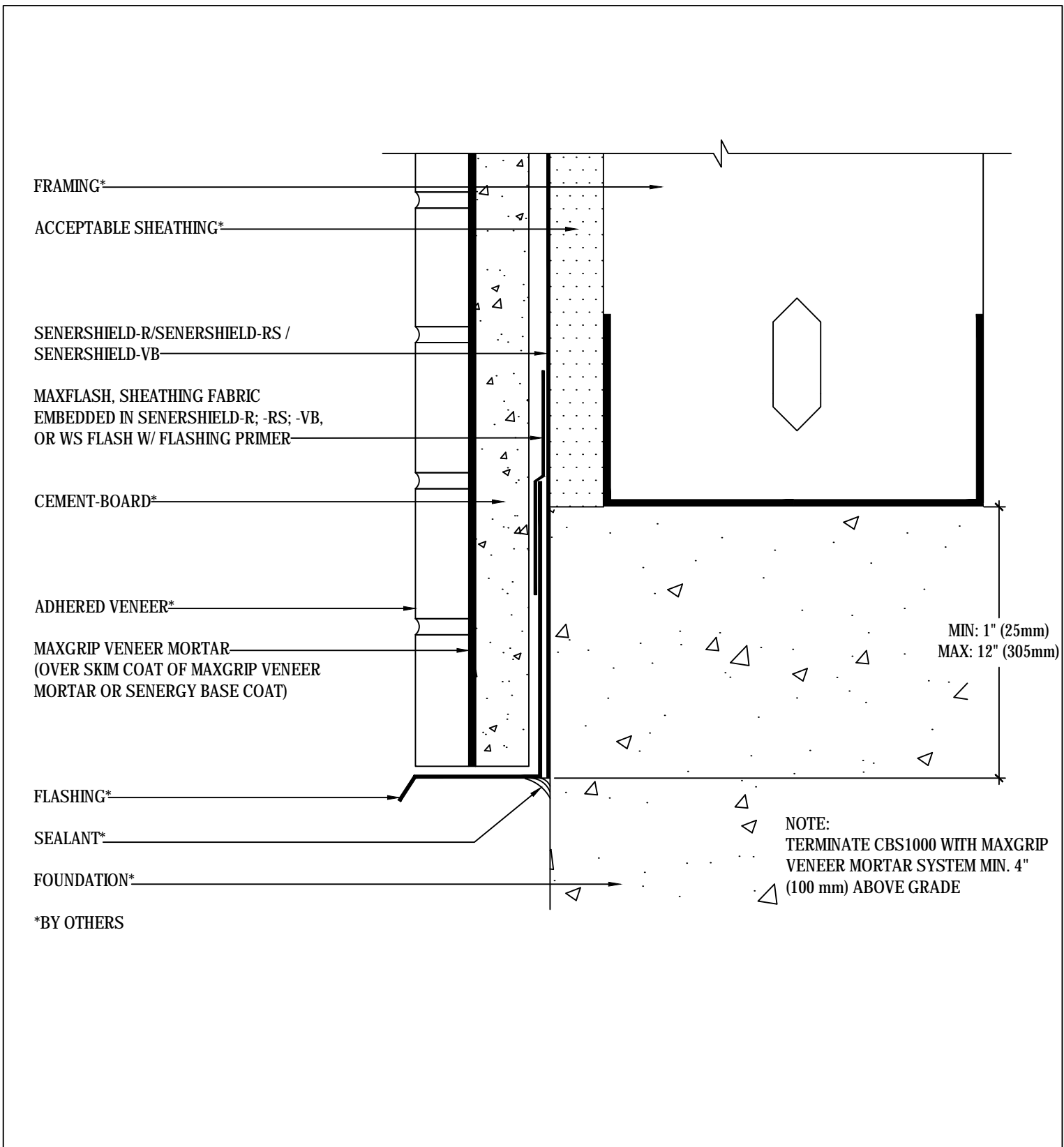
### SENERGY CBS1000 WITH MAXGRIP VENEER MORTAR

SCALE: NTS

01

Structure, substrates, flashing, sealants, and other items which are not part of the BASF SENERGY CBS1000 with MaxGrip Veneer Mortar are the responsibility of others. This detail is subject to change without notice. BASF Corporation - Wall Systems (herein after BASF Wall Systems) accepts no liability for the end use of this detail. For conditions not shown, consult BASF Wall Systems for review of specific detail.

**BASF**  
We create chemistry



## TYPICAL TERMINATION AT FOUNDATION

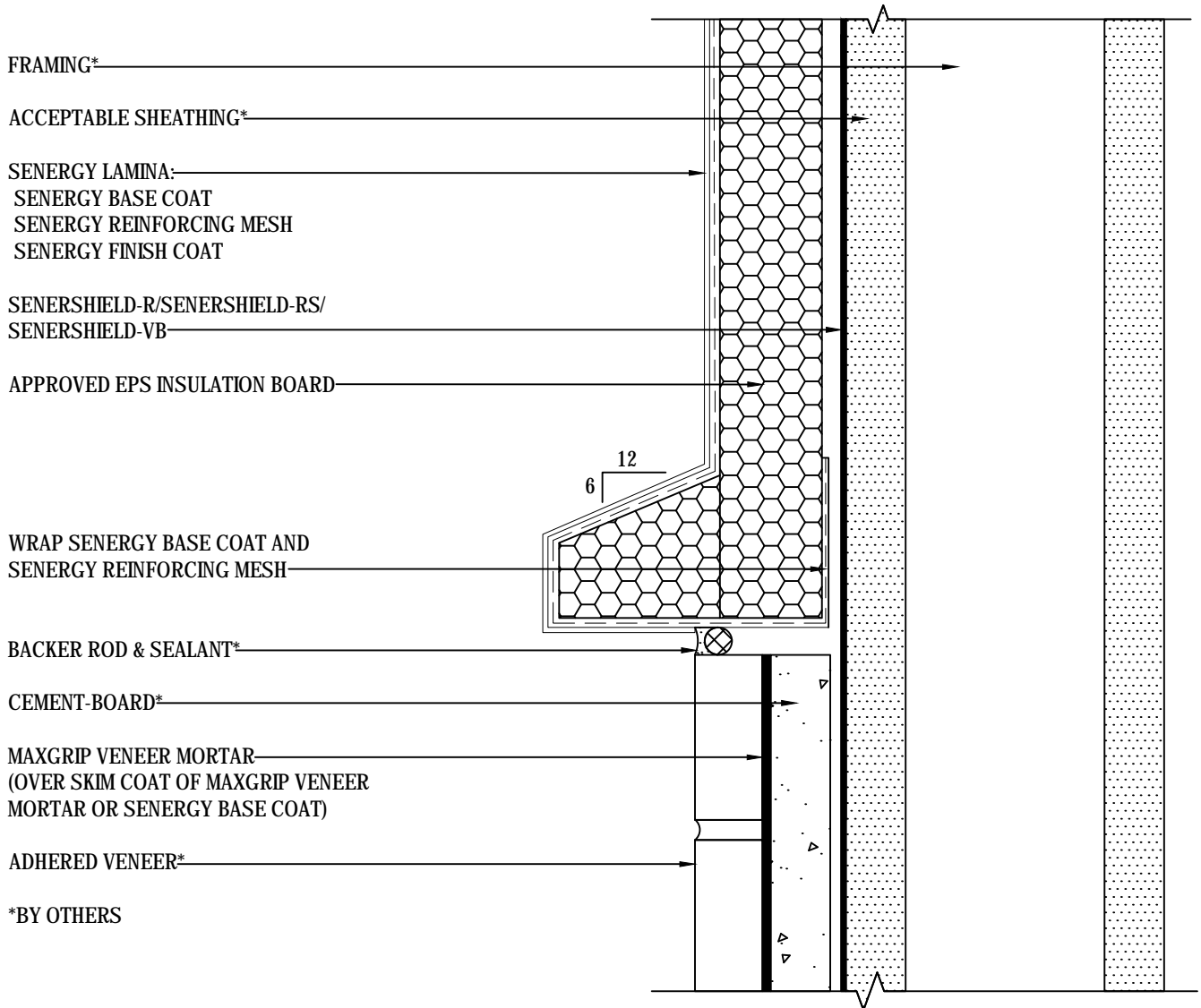
### SENERGY CBS1000 WITH MAXGRIP VENEER MORTAR

SCALE: NTS

02

Structure, substrates, flashing, sealants, and other items which are not part of the BASF SENERGY CBS1000 with MaxGrip Veneer Mortar are the responsibility of others. This detail is subject to change without notice. BASF Corporation - Wall Systems (herein after BASF Wall Systems) accepts no liability for the end use of this detail. For conditions not shown, consult BASF Wall Systems for review of specific detail.

**BASF**  
We create chemistry



## TYPICAL EIFS ABUTMENT TO ADHERED VENEER

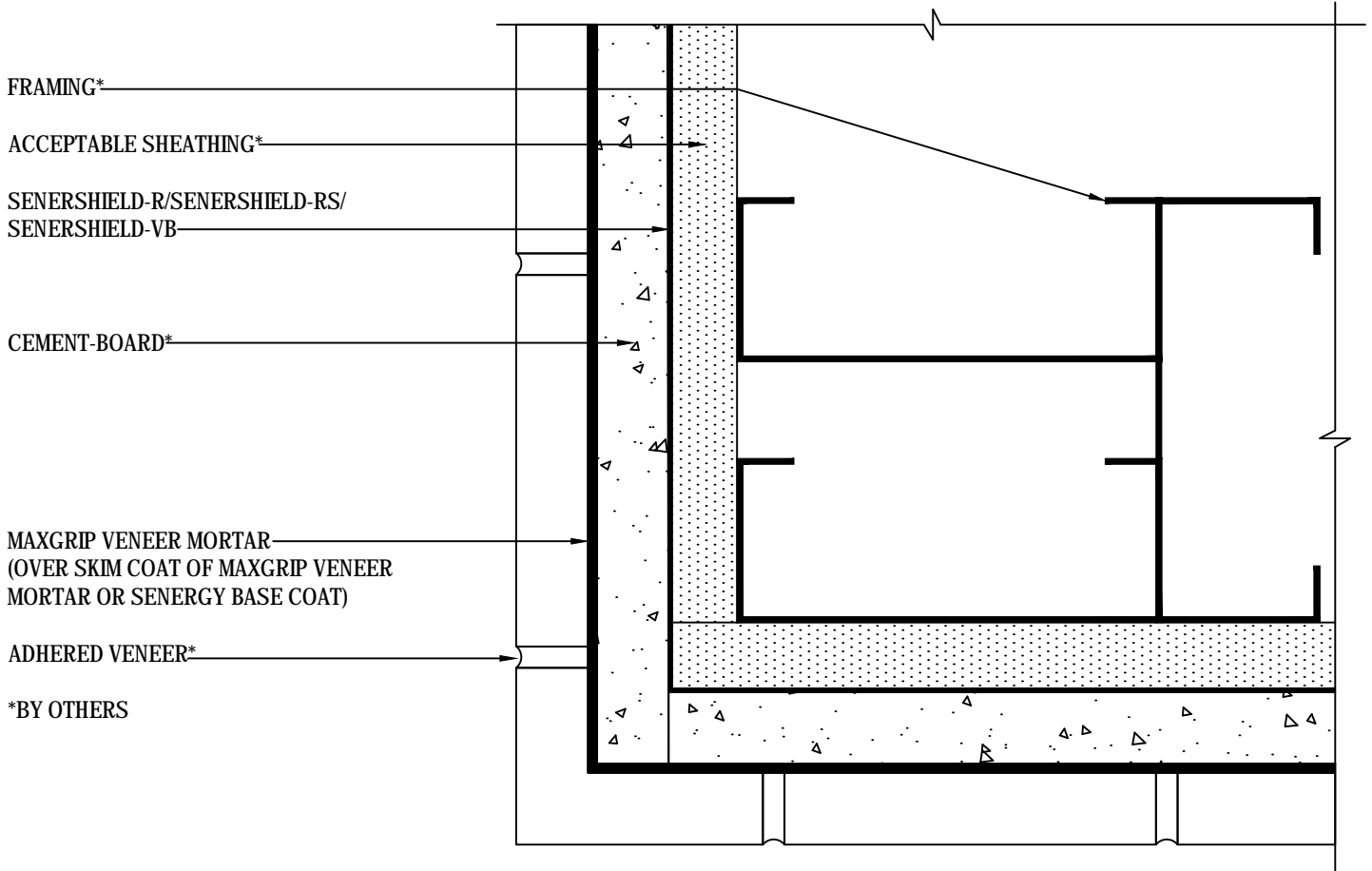
### SENERGY CBS1000 WITH MAXGRIP VENEER MORTAR

SCALE: NTS

03

Structure, substrates, flashing, sealants, and other items which are not part of the BASF SENERGY CBS1000 with MaxGrip Veneer Mortar are the responsibility of others. This detail is subject to change without notice. BASF Corporation - Wall Systems (herein after BASF Wall Systems) accepts no liability for the end use of this detail. For conditions not shown, consult BASF Wall Systems for review of specific detail.

**BASF**  
We create chemistry



NOTE: Cement board joints are treated with Senergy reinforcing mesh and base coat prior to skim coat application per CBS 1000 with MaxGrip Veneer Mortar instructions

## TYPICAL OUTSIDE CORNER APPLICATION

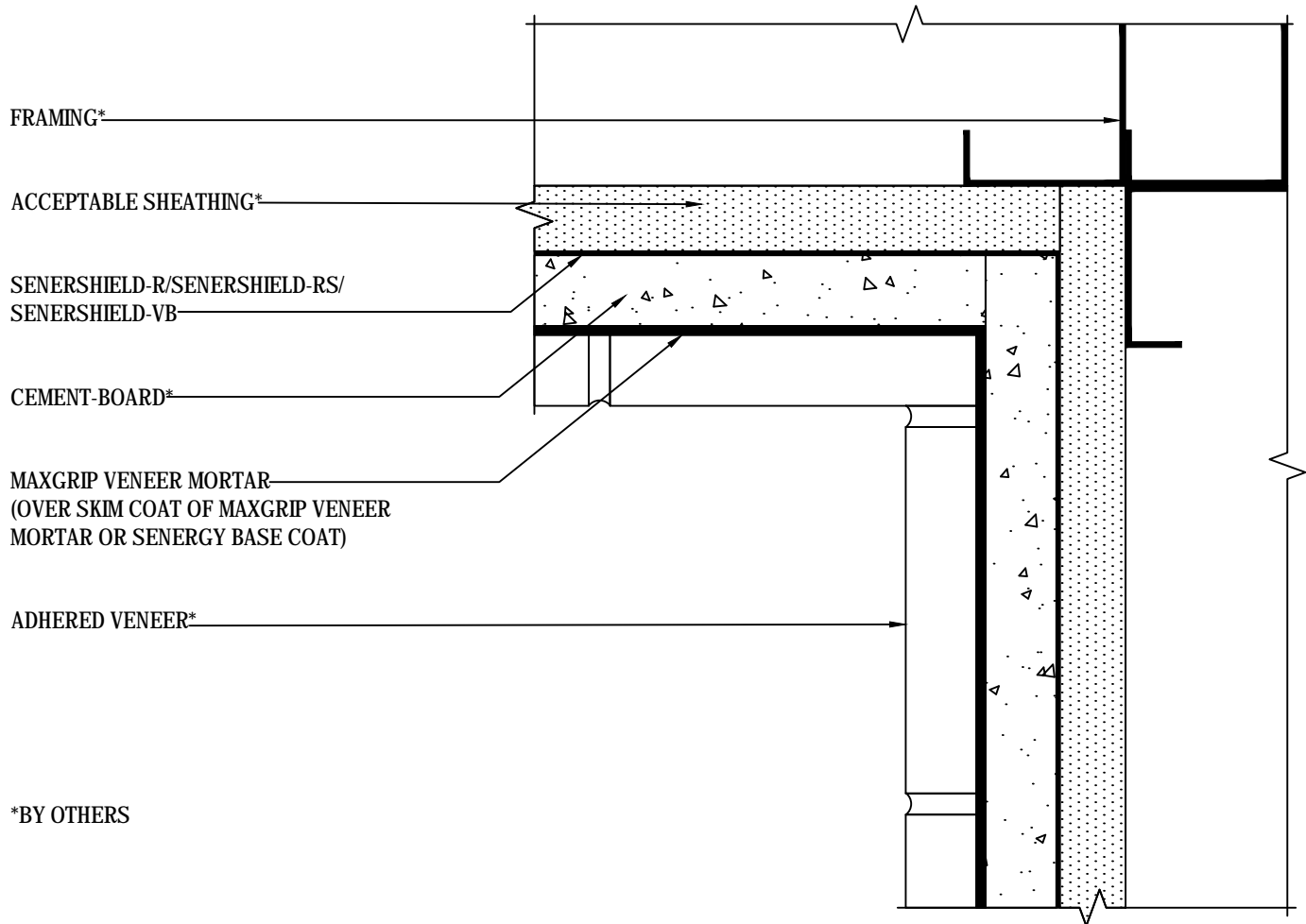
### SENERGY CBS1000 WITH MAXGRIP VENEER MORTAR

SCALE: NTS

04

Structure, substrates, flashing, sealants, and other items which are not part of the BASF SENERGY CBS1000 with MaxGrip Veneer Mortar are the responsibility of others. This detail is subject to change without notice. BASF Corporation - Wall Systems (herein after BASF Wall Systems) accepts no liability for the end use of this detail. For conditions not shown, consult BASF Wall Systems for review of specific detail.

**BASF**  
We create chemistry



NOTE: Cement board joints are treated with Senergy reinforcing mesh and base coat prior to skim coat application per CBS 1000 with MaxGrip Veneer Mortar instructions

## TYPICAL INSIDE CORNER

### SENERGY CBS1000 WITH MAXGRIP VENEER MORTAR

SCALE: NTS

05

Structure, substrates, flashing, sealants, and other items which are not part of the BASF SENERGY CBS1000 with MaxGrip Veneer Mortar are the responsibility of others. This detail is subject to change without notice. BASF Corporation - Wall Systems (herein after BASF Wall Systems) accepts no liability for the end use of this detail. For conditions not shown, consult BASF Wall Systems for review of specific detail.

**BASF**  
We create chemistry

FRAMING\*

ACCEPTABLE SHEATHING\*

SENERSHIELD-R/SENERSHIELD-RS/  
SENERSHIELD-VB

CEMENT-BOARD\*

MAXGRIP VENEER MORTAR  
(OVER SKIM COAT OF MAXGRIP VENEER  
MORTAR OR SENERGY BASE COAT)

ADHERED VENEER\*

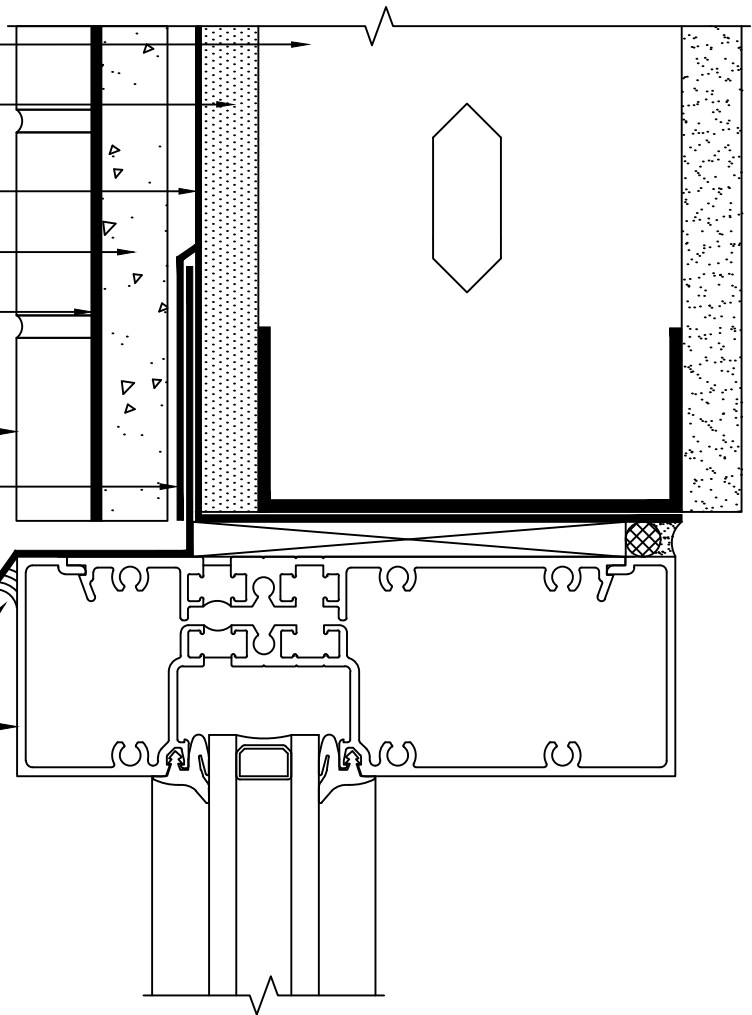
BASF MAXFLASH OR BASF SHEATHING FABRIC  
EMBEDDED IN SENERSHIELD-R; -RS;-VB OR  
BASF WS FLASH W/ FLASHING PRIMER

FLASHING\*

SEALANT\*

WINDOW\*

\*BY OTHERS



NOTE: WRAP MAXFLASH, SHEATHING FABRIC EMBEDDED  
IN SENERSHIELD-R; -RS; -VB OR WS FLASH W/  
FLASHING PRIMER INTO ROUGH OPENING ON  
HEAD IF ALSO INTENDED TO BE AN AIR BARRIER.

## TYPICAL WINDOW HEAD (FLUSH)

### SENERGY CBS1000 WITH MAXGRIP VENEER MORTAR

SCALE: NTS

07

Structure, substrates, flashing, sealants, and other items which are not part of the BASF SENERGY CBS1000 with MaxGrip Veneer Mortar are the responsibility of others. This detail is subject to change without notice. BASF Corporation - Wall Systems (herein after BASF Wall Systems) accepts no liability for the end use of this detail. For conditions not shown, consult BASF Wall Systems for review of specific detail.

**BASF**  
We create chemistry



BASF MAXFLASH OR BASF SHEATHING FABRIC  
EMBEDDED IN SENERSHIELD-R; -RS;-VB OR  
BASF WS FLASH W/ FLASHING PRIMER

WINDOW\*

BACKER ROD AND SEALANT  
(WIDTH PER DESIGN)\*

SENERSHIELD-R/SENERSHIELD-RS/  
SENERSHIELD-VB

ACCEPTABLE SHEATHING\*

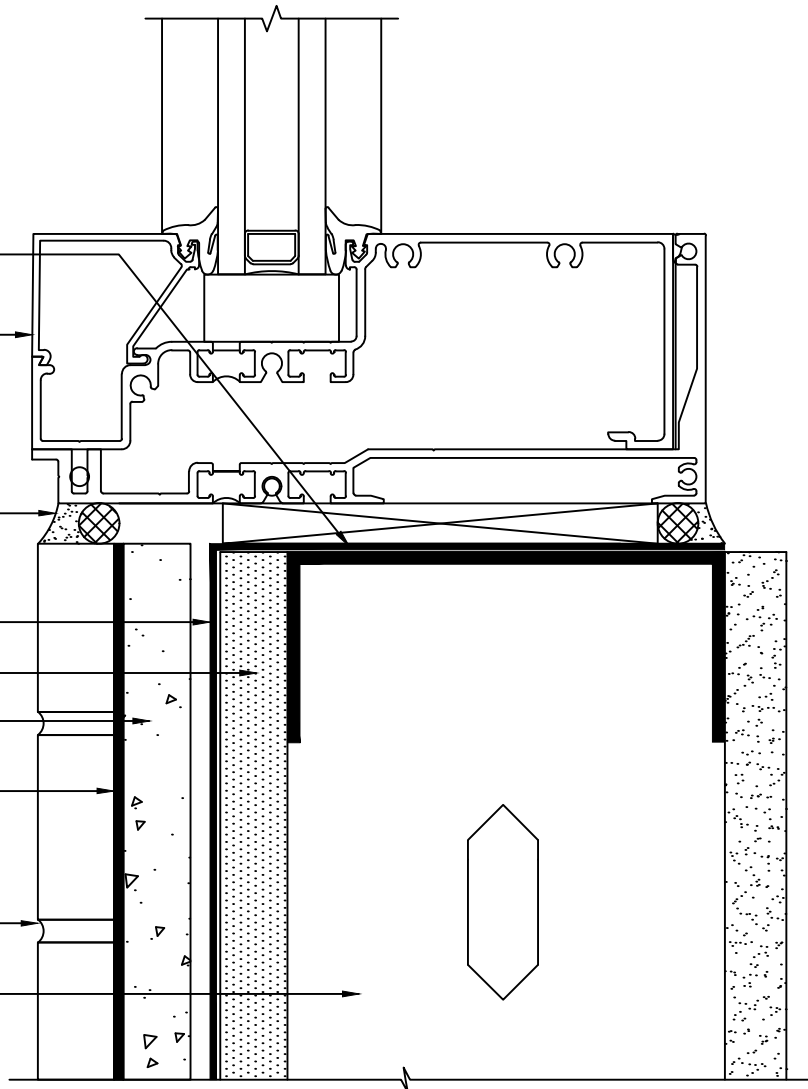
CEMENT-BOARD\*

MAXGRIP VENEER MORTAR  
(OVER SKIM COAT OF MAXGRIP VENEER  
MORTAR OR SENERGY BASE COAT)

ADHERED VENEER\*

FRAMING\*

\*BY OTHERS



## TYPICAL WINDOW SILL DETAIL (FLUSH)

### SENERGY CBS1000 WITH MAXGRIP VENEER MORTAR

SCALE: NTS

08

Structure, substrates, flashing, sealants, and other items which are not part of the BASF SENERGY CBS1000 with MaxGrip Veneer Mortar are the responsibility of others. This detail is subject to change without notice. BASF Corporation - Wall Systems (herein after BASF Wall Systems) accepts no liability for the end use of this detail. For conditions not shown, consult BASF Wall Systems for review of specific detail.

**BASF**  
We create chemistry

ROOF EDGE FLASHING\*

BASF MAXFLASH OR BASF SHEATHING FABRIC  
EMBEDDED IN SENERSHIELD-R; -RS; VB OR  
BASF WS FLASH W/ FLASHING PRIMER

MIN. 2" (50MM)

SEALANT\*

FRAMING\*

ACCEPTABLE SHEATHING\*

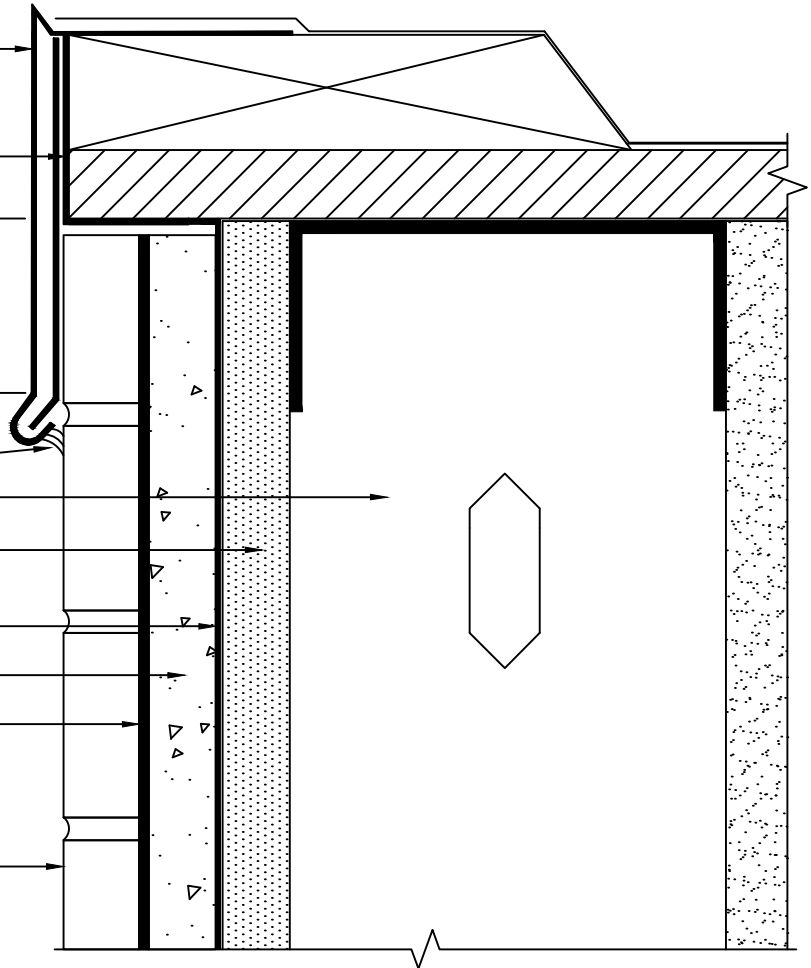
SENERSHIELD-R/SENERSHIELD-RS/  
SENERSHIELD-VB

CEMENT-BOARD\*

MAXGRIP VENEER MORTAR  
(OVER SKIM COAT OF MAXGRIP  
VENEER MORTAR OR SENERGY BASE  
COAT)

ADHERED VENEER\*

\*BY OTHERS



## TYPICAL ROOF EDGE FLASHING DETAIL

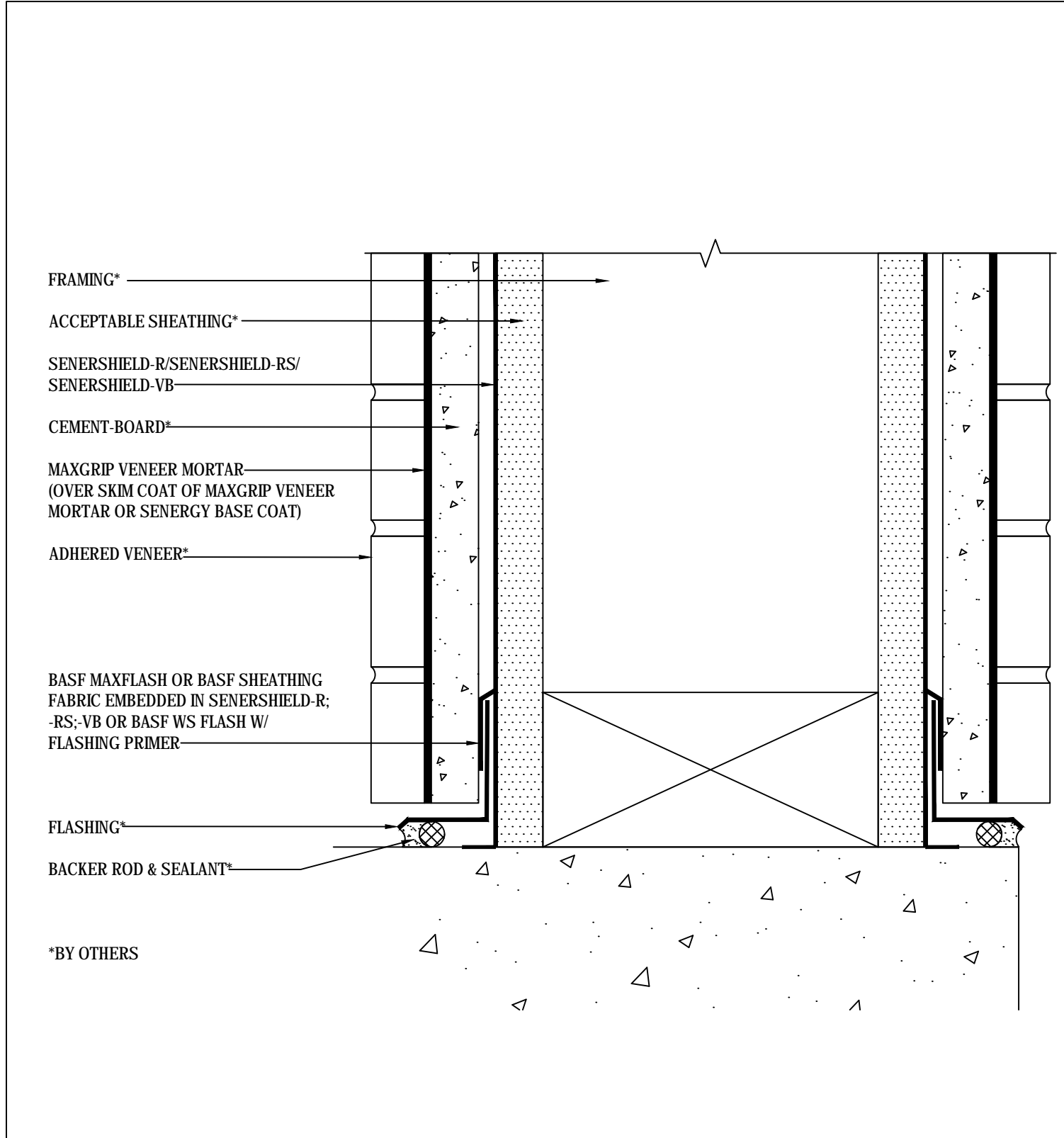
### SENERGY CBS1000 WITH MAXGRIP VENEER MORTAR

SCALE: NTS

09

Structure, substrates, flashing, sealants, and other items which are not part of the BASF SENERGY CBS1000 with MaxGrip Veneer Mortar are the responsibility of others. This detail is subject to change without notice. BASF Corporation - Wall Systems (herein after BASF Wall Systems) accepts no liability for the end use of this detail. For conditions not shown, consult BASF Wall Systems for review of specific detail.

**BASF**  
We create chemistry



\*BY OTHERS

## TYPICAL COLUMN BASE TERMINATION

### SENERGY CBS1000 WITH MAXGRIP VENEER MORTAR

SCALE: NTS

10

Structure, substrates, flashing, sealants, and other items which are not part of the BASF SENERGY CBS1000 with MaxGrip Veneer Mortar are the responsibility of others. This detail is subject to change without notice. BASF Corporation - Wall Systems (herein after BASF Wall Systems) accepts no liability for the end use of this detail. For conditions not shown, consult BASF Wall Systems for review of specific detail.



SENERSHIELD-R/SENERSHIELD-RS/  
SENERSHIELD-VB

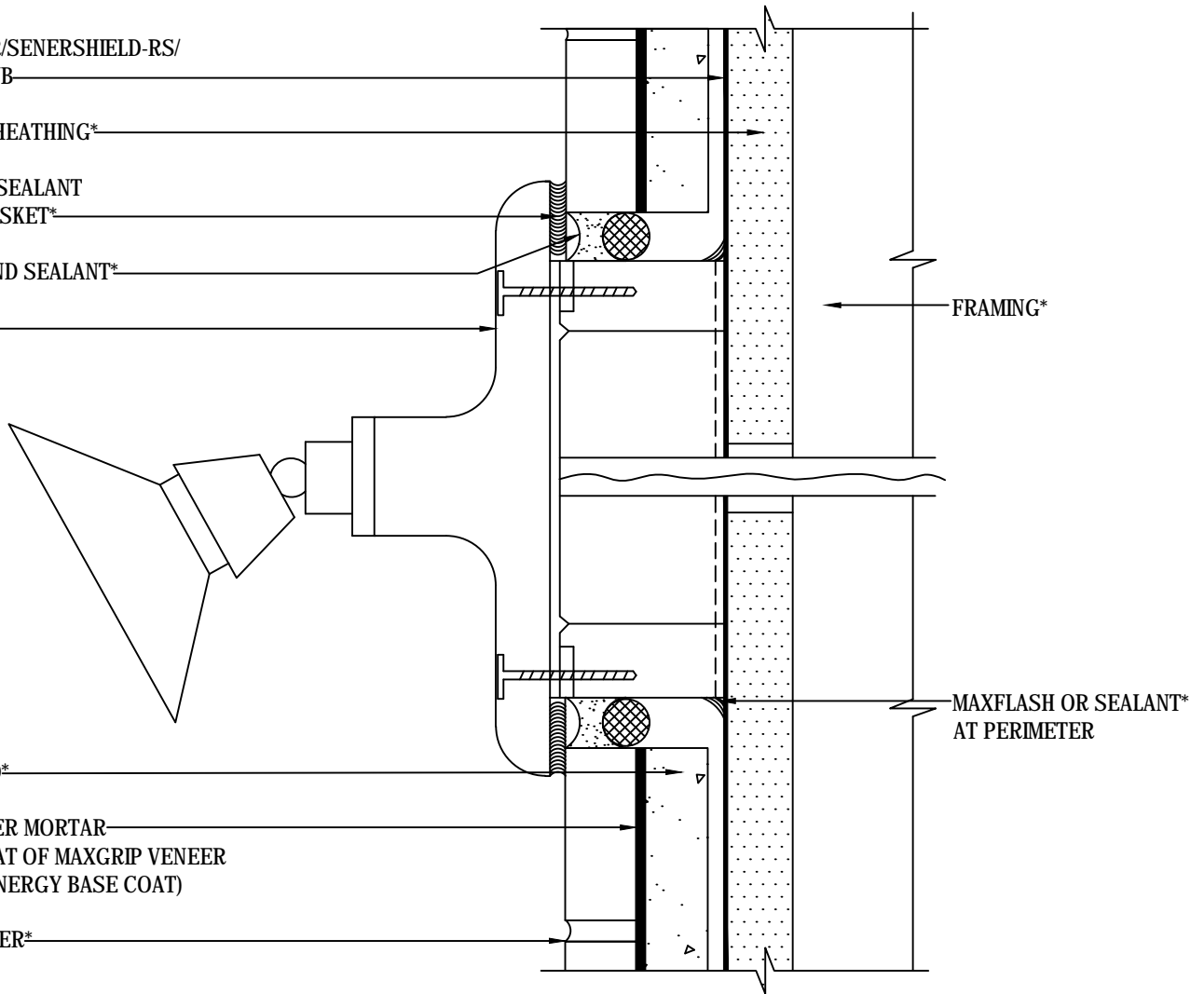
ACCEPTABLE SHEATHING\*

SET FLANGE IN SEALANT  
OR PROVIDE GASKET\*

BACKER ROD AND SEALANT\*

LIGHT FIXTURE\*

FRAMING\*



CEMENT-BOARD\*

MAXGRIP VENEER MORTAR  
(OVER SKIM COAT OF MAXGRIP VENEER  
MORTAR OR SENERGY BASE COAT)

ADHERED VENEER\*

\*BY OTHERS

## TYPICAL LIGHT FIXTURE

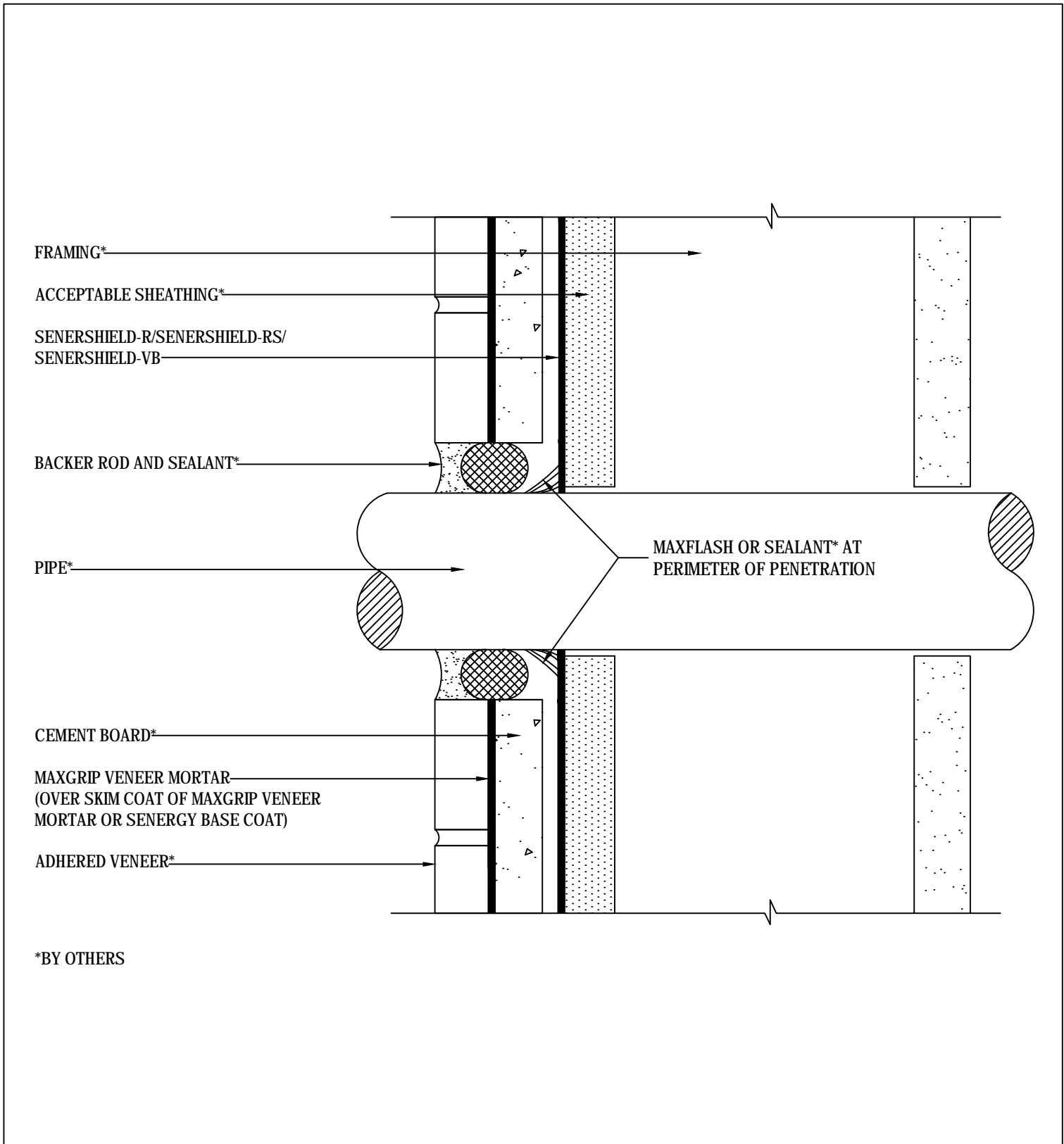
### SENERGY CBS1000 WITH MAXGRIP VENEER MORTAR

SCALE: NTS

11

Structure, substrates, flashing, sealants, and other items which are not part of the BASF SENERGY CBS1000 with MaxGrip Veneer Mortar are the responsibility of others. This detail is subject to change without notice. BASF Corporation - Wall Systems (herein after BASF Wall Systems) accepts no liability for the end use of this detail. For conditions not shown, consult BASF Wall Systems for review of specific detail.

**BASF**  
We create chemistry



## TYPICAL PIPE PENETRATION

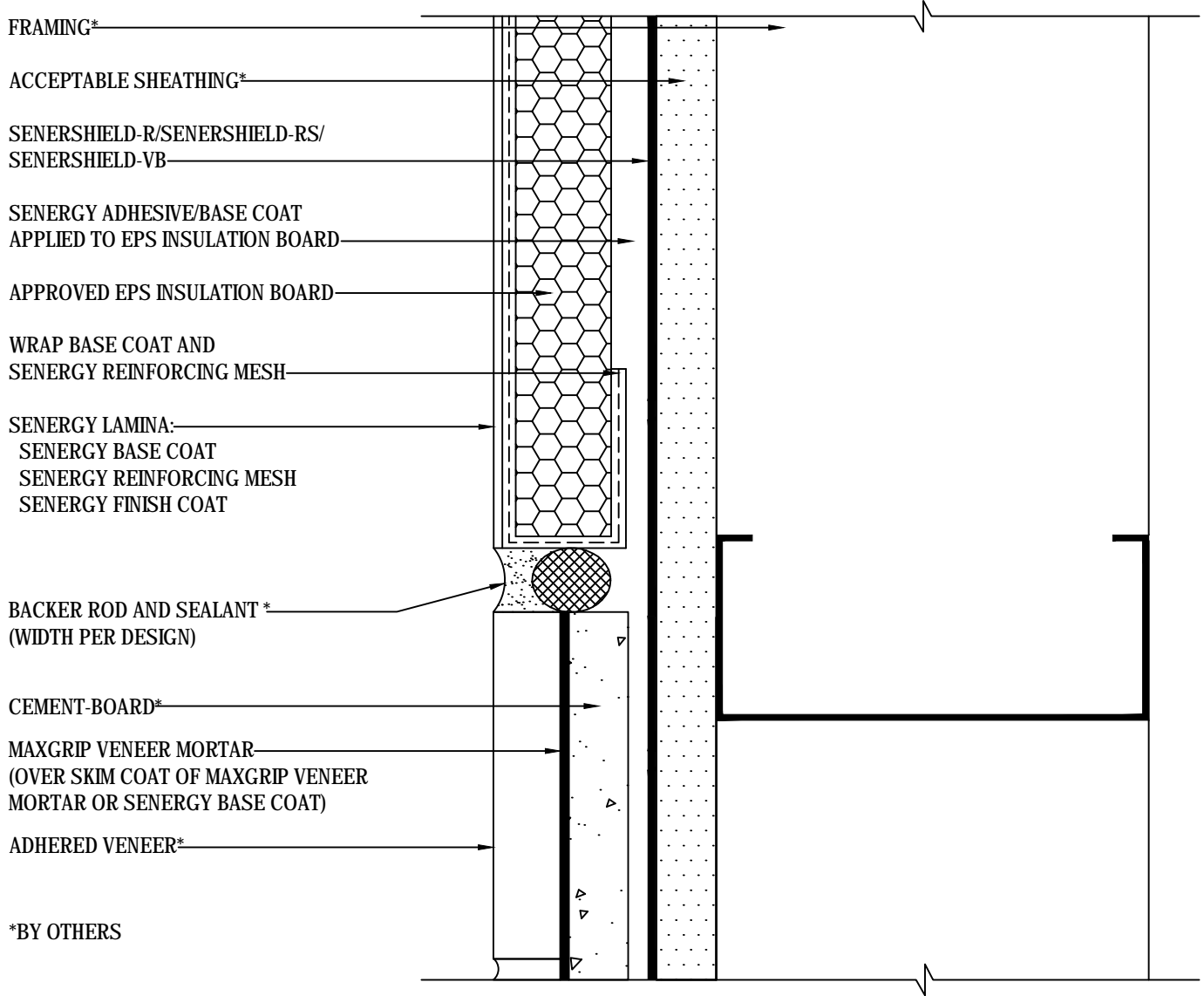
### SENERGY CBS1000 WITH MAXGRIP VENEER MORTAR

SCALE: NTS

12

Structure, substrates, flashing, sealants, and other items which are not part of the BASF SENERGY CBS1000 with MaxGrip Veneer Mortar are the responsibility of others. This detail is subject to change without notice. BASF Corporation - Wall Systems (herein after BASF Wall Systems) accepts no liability for the end use of this detail. For conditions not shown, consult BASF Wall Systems for review of specific detail.

**BASF**  
We create chemistry



**TYPICAL TERMINATION AT DISSIMILAR MATERIAL (PLAN VIEW)**  
**SENERGY CBS1000 WITH MAXGRIP VENEER MORTAR**

SCALE: NTS

**13**

Structure, substrates, flashing, sealants, and other items which are not part of the BASF SENERGY CBS1000 with MaxGrip Veneer Mortar are the responsibility of others. This detail is subject to change without notice. BASF Corporation - Wall Systems (herein after BASF Wall Systems) accepts no liability for the end use of this detail. For conditions not shown, consult BASF Wall Systems for review of specific detail.



**BASF Corporation - Wall Systems**

889 Valley Park Drive  
Shakopee, MN 55379

Phone: 888.338.7170

[www.senergy.basf.com](http://www.senergy.basf.com)

©2019 BASF Corporation

rev 09/2019