



We create chemistry

Product Bulletin

# Drainage Mat DF

Drainage Mat DF is a composite, dual function product. It consists of a nylon entangled filament core that is thermally bonded to spun bonded continuous bi-component fiber non-woven fabric.

## USES

For use with cement plaster stucco wall systems and other wall cladding applications to provide a defined drainage plane with an avenue for flow and drainage of incidental moisture penetration from the wall assembly.

## COVERAGE

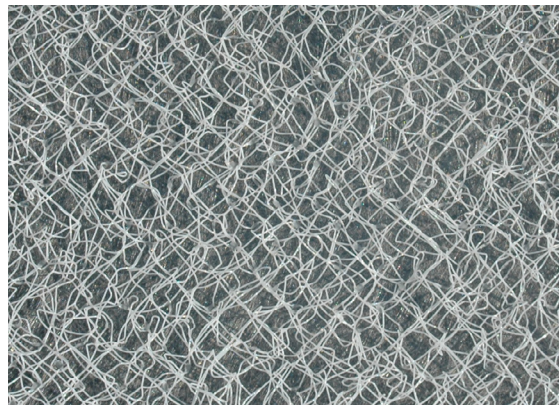
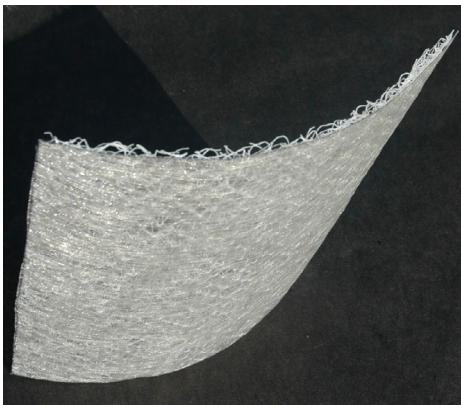
Approximate coverage rates are as follows: 45.3m<sup>2</sup> (487.5 ft<sup>2</sup>) per roll.

## PACKAGING

99cm x 45.7m (39" x 150') rolls, 6 rolls per pallet. Gross roll weight 11.3 kg (25 lbs).

## TECHNICAL SUPPORT

Consult our Technical Services Department for specific recommendations concerning all other applications. Consult the BASF Wall Systems website, [www.wallsystems.basf.com](http://www.wallsystems.basf.com), or 800-221-9255 for additional information about products and systems and for updated literature.



## Advantages

150 foot roll minimizes number of seams to speed application

Entangled filament construction creates optimal drainage plane while retaining flexibility

Lightweight; easy to handle

Non-scratch nylon construction provides flexibility, enhances easy application

Drainage Mat DF prevents the cement plaster from blocking the drainage plane; enables rain screen design for maximum drainage and ventilation efficiency

# Drainage Mat DF

## PHYSICAL PROPERTIES

### Property

Core Material	Virgin & Recycled Nylon 6
Core Color	White
Thickness	7.6 mm (5/16")
Total Weight	222.8 g/m <sup>2</sup> (6.57 oz/yd <sup>2</sup> )
Core Weight	172.9 g/m <sup>2</sup> (5.1 oz/yd <sup>2</sup> )
Recycled Content	Min. - Core 40% Pre Consumer (by weight)
Recycled Content	Min. - Total 31% Pre Consumer (by weight)

## APPLICATION

### Job Conditions

Temporary Protection: Protect DRAINAGE MAT DF during transportation, storage and installation to avoid physical damage. Store DRAINAGE MAT DF off the ground, protected from direct sunlight, weather and other construction site activities.

### Surface Prep

Weep Scream and window head flashing will have been installed prior to application of air/water-resistive barrier. Acceptable substrates will have been treated with air/water-resistive barrier and all openings properly flashed prior to installing DRAINAGE MAT DF. Confirm that application of air/water-resistive barrier was performed in accordance with product application instructions.

### Equipment

Use scissors and/or knife for cutting DRAINAGE MAT DF; tack hammer and/or staple gun for attaching it to the wall.

### Procedure

1. Apply DRAINAGE MAT DF horizontally over air/water-resistive barrier (if it is a fluid-applied air/water-resistive barrier, it shall be dry). DRAINAGE MAT DF should be free of wrinkles, creases and tears. The fabric side of the DRAINAGE MAT DF shall face outward toward the installer, and the nylon mat shall be in contact with the surface of the air/water-resistive barrier.
2. Secure DRAINAGE MAT DF to substrate with sufficient building staples or galvanized nails to remain in place prior to application of exterior cladding system.
3. To prevent sagging of DRAINAGE MAT DF install casing beads, control joints, expansion joints and corner beads within 24 hours after DRAINAGE MAT DF installation.

## LIMITATIONS

### Stacking

Do not stack pallets.

## WARRANTY

BASF warrants this product to be free from manufacturing defects and to meet the technical properties on the current Product Bulletin, if used as directed within shelf life. Satisfactory results depend not only on quality products but also upon many factors beyond our control. BASF MAKES NO OTHER WARRANTY OR GUARANTEE, EXPRESS OR IMPLIED, INCLUDING WARRANTIES OF MERCHANTABILITY OR FITNESS FOR A PARTICULAR PURPOSE WITH RESPECT TO ITS PRODUCTS. The sole and exclusive remedy of Purchaser for any claim concerning this product, including but not limited to, claims alleging breach of warranty, negligence, strict liability or otherwise, is shipment to purchaser of product equal to the amount of product that fails to meet this warranty or refund of the original purchase price of product that fails to meet this warranty, at the sole option of BASF. In the absence of an extended warranty issued by BASF, any claims concerning this product must be received in writing within one (1) year from the date of shipment and any claims not presented within that period are waived by Purchaser. BASF WILL NOT BE RESPONSIBLE FOR ANY SPECIAL, INCIDENTAL, CONSEQUENTIAL (INCLUDING LOST PROFITS) OR PUNITIVE DAMAGES OF ANY KIND.

Purchaser must determine the suitability of the products for the intended use and assumes all risks and liabilities in connection therewith. This information and all further technical advice are based on BASF's present knowledge and experience. However, BASF assumes no liability for providing such information and advice including the extent to which such information and advice may relate to existing third party intellectual property rights, especially patent rights, nor shall any legal relationship be created by or arise from the provision of such information and advice. BASF reserves the right to make any changes according to technological progress or further developments. The Purchaser of the Product(s) must test the product(s) for suitability for the intended application and purpose before proceeding with a full application of the product(s). Performance of the product described herein should be verified by testing and carried out by qualified experts.