



# Finestone Stucco Plus Wall System

Premium cement plaster stucco  
with a fluid air/water-resistive barrier

## DESCRIPTION

Finestone Stucco Plus is a highly advanced Portland cement-based exterior wall system. It features a liquid applied air/water-resistive barrier, rustproof fiberglass lath, a base coat and textured finishes. Integrated system components include Finestop RA, StuccoBase / StuccoBase Premix, optional Stucco Prime, Base Coat, optional reinforced base coat and 100% acrylic polymer finish.

Apply the system to PermaLath® 1000 or 3.4 lb/sq. yd. metal lath over building paper over Finestop RA air/water-resistive barrier over the following acceptable sheathing: PermaBase® Cement Board and other cement-boards conforming with ASTM C1325 (Type A-exterior); poured concrete/unit masonry; ASTM C1177 type sheathings, including, Weather Defense™ Platinum sheathing, GreenGlass® sheathing, eXP™ sheathing, GlasRoc® sheathing, Securock™ glass-mat sheathing, and DensGlass® exterior sheathing; gypsum sheathing (ASTM C79/C1396); Exposure I or exterior plywood (Grade C/D or better); or Exposure I OSB.

Required control joints can be used as design elements, and special shapes and architectural details are easy to add.

Finishes are available in a limitless color selection and offer performance enhancement options, including increased resistance to dirt pick-up and mildew and cracking.

Finestone Stucco Plus features easy installation, proven performance, exceptional durability and low maintenance.

## USES

New or retrofit residential, institutional and commercial low-rise construction such as hotels, hospitals, retail centers, schools, multi-family apartments and condominiums, and government facilities.

## ADVANTAGES

- Fluid applied air/water-resistive barrier provides a durable, seamless building wrap.
- Self-furred glass fiber reinforcing lath in durable plaster base that will not rust.
- Factory prepared StuccoBase minimizes potential site mixing errors; improves quality control.
- Acrylic modified base coat over StuccoBase enhances water resistance performance and finish coat aesthetics.

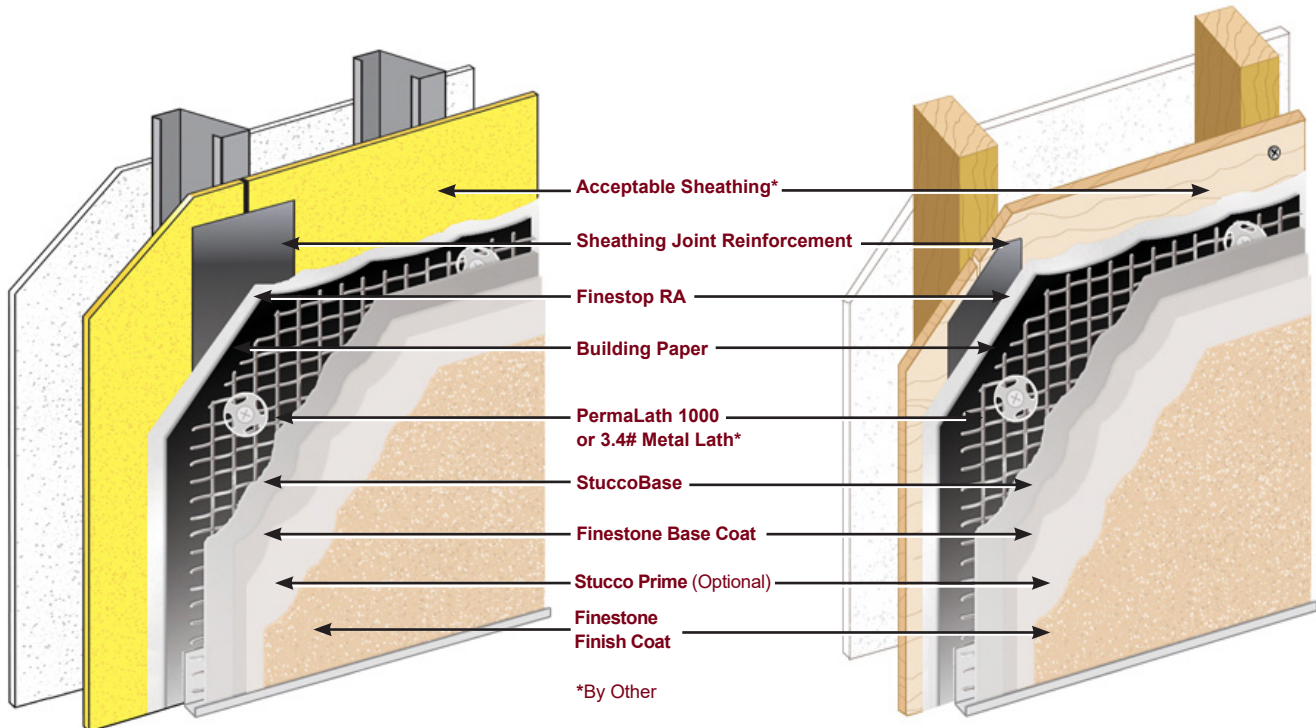
- Elastomeric finish coat bridges hairline cracks.
- Reinforcing mesh option further increases crack resistance.
- Very resistant to impact and punctures; good for high traffic areas.
- Fade-, abrasion- and dirt-resistant finishes contribute to low maintenance and life-cycle costs.
- EPS shapes integrate into the system for economical architectural detailing; more valuable appearance.

## DESIGN CONSIDERATIONS

- Maximum allowable deflection  $L/360$ , based on stud properties only.
- The design wind load shall not exceed the system's allowable wind load as stated in applicable code reports.
- Details shall conform with Master Builders Solutions recommendations and shall be consistent with the project requirements.
- Control joints and trim accessories required. Control joint placement is required in the Finestone Stucco Plus Wall System every 144 ft<sup>2</sup> per ASTM C1063.
- Consult the framing and sheathing manufacturer for design and application considerations.
- Expansion joints are required in the system where they exist in the substrate, where the system adjoins dissimilar construction, at changes in substrates and at floor lines in multilevel wood frame construction.
- System shall terminate at expansion joints.
- Sealant joints shall be detailed and installed per sealant manufacturer's recommendations.
- A minimum 6:12 slope is required on all horizontal surfaces greater than 1".
- Backer rod, sealant and flashing are required at door and window openings.

## Finestone Stucco Plus System over metal studs with ASTM C1325 or ASTM C1177 sheathing

## Finestone Stucco Plus System over wood studs with ASTM C1325 or ASTM C1177 sheathing



### BEST PRACTICES FOR INSTALLERS

#### General

- It is recommended that the building should carry a minimum of 90 percent of the dead building load and that the interior gypsum should be installed prior to installation of the stucco.
- Coordination of other trades is recommended so that wall penetrations for cable, electricity, water and vents are installed with proper enclosures prior to installation of the stucco.
- Pail components must be kept at a minimum of 4°C (40°F) and at a maximum of 43°C (110°F) during shipping and storage.
- A minimum temperature of 4°C (40°F) is required during application of liquid components and until completely dried.
- Protect dry (bagged) products from moisture.
- No additives are permitted to any components unless specifically approved by Master Builders Solutions Wall Systems.
- Follow the application instructions for each component.
- Windows and doors may permit some water to pass through the frame materials or joints. To reduce the potential for intruding water to degrade water-sensitive sheathing and framing, and to keep water out of the stud cavity, rough openings must be properly protected and a means provided to allow intruding water to escape.

#### Framing/Sheathing

- Framing, plywood and OSB should have moisture content of less than 19 percent. Wet wood will shrink and deform, potentially resulting in the cracking of stucco.
- Sheathing must be securely fastened per applicable building code and manufacturer's requirements. Sheathing must be attached with corrosion resistant fasteners.
- All substrates must be clean, dry and sound without planar irregularities greater than 1/4" in 10'.
- Sheathing must be protected with a secondary weather-resistant barrier installed over the sheathing per applicable building code and manufacturer's requirements.
- Sheathing and lath must be installed according to code requirements in effect.

#### EPS Insulation (Optional)

Optional EPS insulation boards should be stored flat, out of direct sunlight.

#### StuccoBase

- Use only clean, potable water for the mix. Plaster sand must be clean, free of impurities and comply with ASTM C144.
- StuccoBase must damp cure for a minimum of 48 hours. Lightly and evenly fog the wall as frequently as conditions dictate in order to keep the base damp.

- StuccoBase must cure a minimum of 6 days prior to the application of EPS shapes, base coat, optional reinforced base coat layer, optional primer and finish coat.

### Base Coat

- Apply mesh reinforced base coat after StuccoBase has cured for a minimum of 6 days.
- Special shapes should be attached prior to reinforcement layer over StuccoBase. They must be reinforced with Finestone Base Coat and Standard Reinforcing Mesh.
- If optional mesh reinforcement is specified, apply Standard or Intermediate 6 and Finestone Base Coat over the entire StuccoBase surface.
- Reinforcing meshes must overlap a minimum of 2 1/2".
- Mesh color or predominant mesh pattern should not be visible through the base coat.
- Protect from precipitation for a minimum of 24 hours.

### Finish

- Use only stainless steel trowels.
- Avoid working in direct sunlight.
- Finishes should be applied with adequate man power, tools and staging to keep a wet edge.
- A primer tinted to the color of the finish is recommended prior to application of rilled finishes.
- Do not run finish into joints.
- Do not quit in the middle of a wall; run to natural breaks.
- Do not use different batches of finish on the same elevation.
- Protect from precipitation for a minimum of 24 hours.
- Use only sealants that are acceptable for use with this system. Acceptable sealants and backer rods or bond breakers must be installed at all transitions between this system and other wall assembly elements such as windows, doors, vents, transitions to dissimilar materials, A/C cases, and other penetrations.
- Do not apply finish over sealants.

### LIMITATIONS

1. Susceptibility to efflorescence can be reduced by using Stucco Prime.
2. Not for use below grade.
3. Base coat thickness of this system might result in planar irregularities in finished wall appearance.
4. Do not cut aesthetic grooves into the wall surface.

**Master Builders Solutions  
Constructions Systems US, LLC**  
889 Valley Park Drive  
Shakopee, MN 55379 USA

**Customer Service (800) 433-9517**  
**Technical Service (800) 589-1336**  
[finestone.master-builders-solutions.com/en](http://finestone.master-builders-solutions.com/en)



® registered trademark of a Group member  
in many countries of the world  
© 2021 MBCC Group, rev 05/2021

**LIMITED WARRANTY NOTICE:** Master Builders Solutions Construction Systems US, LLC ("Master Builders") warrants this product to be free from manufacturing defects and to meet the technical properties on the current Technical Data Guide, if used as directed within shelf life. Satisfactory results depend not only on quality products but also upon many factors beyond our control. Master Builders MAKES NO OTHER WARRANTY OR GUARANTEE, EXPRESS OR IMPLIED, INCLUDING WARRANTIES OF MERCHANTABILITY OR FITNESS FOR A PARTICULAR PURPOSE WITH RESPECT TO ITS PRODUCTS. The sole and exclusive remedy of Purchaser for any claim concerning this product, including but not limited to, claims alleging breach of warranty, negligence, strict liability or otherwise, is shipment to purchaser of product equal to the amount of product that fails to meet this warranty or refund of the original purchase price of product that fails to meet this warranty, at the sole option of Master Builders. Any claims concerning this product must be received in writing within one (1) year from the date of shipment and any claims not presented within that period are waived by Purchaser. Master Builders WILL NOT BE RESPONSIBLE FOR ANY SPECIAL, INCIDENTAL, CONSEQUENTIAL (INCLUDING LOST PROFITS) OR PUNITIVE DAMAGES OF ANY KIND.

Purchaser must determine the suitability of the products for the intended use and assumes all risks and liabilities in connection therewith. This information and all further technical advice are based on Master Builders present knowledge and experience. However, Master Builders assumes no liability for providing such information and advice including the extent to which such information and advice may relate to existing third party intellectual property rights, especially patent rights, nor shall any legal relationship be created by or arise from the provision of such information and advice. Master Builders reserves the right to make any changes according to technological progress or further developments. The Purchaser of the Product(s) must test the product(s) for suitability for the intended application and purpose before proceeding with a full application of the product(s). Performance of the product described herein should be verified by testing and carried out by qualified experts.