

## PEBBLETEX-D7 SYSTEM

Class PB Exterior Insulation and Finish System with Drainage

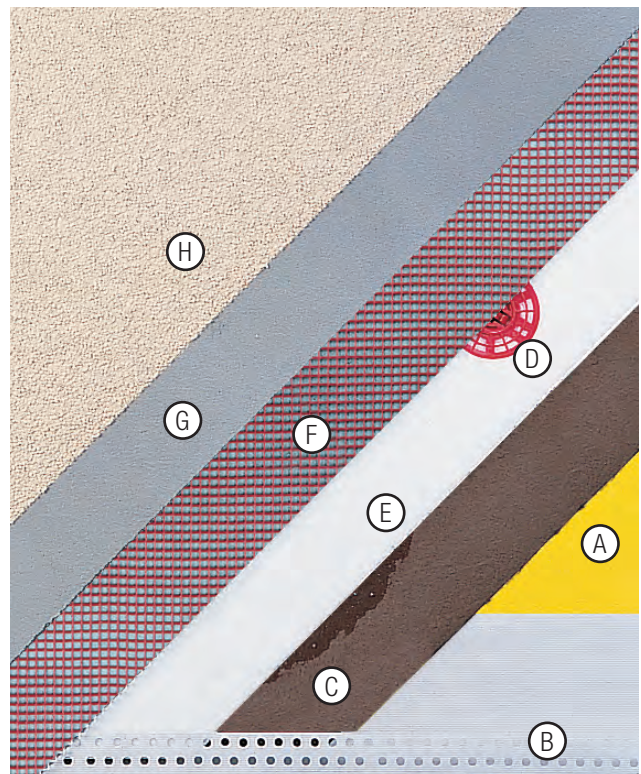
### System Overview

Finestone Pebbletex-D7 System is a non-structural Class PB Exterior Insulation and Finish System (EIFS) that incorporate a water-resistive barrier to protect against incidental moisture intrusion. Use this system for application to structural exterior walls of exposure 1 or exterior plywood sheathing (Grade C-D or better), exposure 1 OSB, exterior gypsum sheathing (ASTM C79/C1396), DensGlass Gold® sheathing (ASTM C1177), cement board (ASTM C1325), concrete or masonry substrates, or other approved substrates or sheathing.

**Recommended Uses:** Commercial structures, such as hotels, hospitals, schools, stores, and municipal buildings, and residential applications including one- or two-family dwellings.

### Pebbletex-D7 SYSTEM COMPONENTS

- A** Substrate/Sheathing
- B** Flashing/Starter Track
- C** Water-Resistive Barrier
- D** Mechanical Fasteners
- E** Grooved or Channeled  
EPS Insulation Board
- F** Reinforcing Mesh
- G** Base Coat
- H** Finish Coat



# Pebbletex-D7 System

## ADVANTAGES

---

- Incorporates a secondary weather barrier
  - Provides a drainage plane for directing incidental moisture out of the wall assembly
  - Seamless wall surface provides high resistance to potential water intrusion from rain and other environmental sources
  - Cost-effective
  - Flexible
  - Resilient
  - Ability to achieve any architectural style with unlimited design options
  - Economical architectural detailing
  - Does not require control joints
  - Seamless exterior blanket of insulation provides high R values, lowers heating and cooling costs
  - Multiple options for impact resistance improve functional design, ease of maintenance
  - Wide selection of finish textures, 64 Standard Colors and unlimited custom colors
- 



## Required Design Elements

### Expansion Joints

Required in the following locations:

Where movement is anticipated

(e.g., floor lines, canopies, carports, porte-cocheres, etc.)

Where EIFS meets dissimilar materials

(e.g., windows, doors, transitions to brick or other siding)

Where substrate materials change

At floor lines in wood frame construction where movement or cross grain shrinkage is anticipated

At locations where the design professional deems appropriate

Minimum expansion joint size: 13 mm ( $\frac{1}{2}$ " ) or 4 times anticipated movement. Minimum 19 mm ( $\frac{3}{4}$ " ) expansion joint required for structural movement.

### Horizontal Applications

Minimum slope: 1:2 with maximum width of 30.5 cm (12") [e.g. 15 cm in 30.5 cm (6" in 12") width].

### Substrate

Maximum substrate design deflection is L/240.

See *Finestone Approved Substrate Selector* for list of approved substrates for Pebbletex-D7 Systems.

### Water-Resistive Barrier

Appropriate secondary weather barrier (Finestop or Finestop-RA) installed in accordance with *Pebbletex-D7 Guide Specification*.

### Drainage Cavity

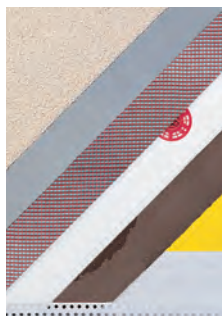
Incidental moisture drains via grooved or channeled EPS insulation board when installed in accordance with *Pebbletex-D7 Guide Specification*.

### Sealants, Backer Rod, Flashing

Approved sealant installed with approved backer rod or bond breaker tape shall be used at all transitions between EIFS and other structural elements such as windows, doors, vents, penetrations, transitions to dissimilar elements, etc.

Flashing at windows, doors, chimneys, transitions between EIFS and roof and at other points specified shall be installed in accordance with component manufacturer's instructions.

## System Options



Pebbletex-D7

<b>Approved Sheathing/Substrate</b>	See <i>Finestone Approved Substrate Selector</i>
<b>Air/Weather Barrier</b>	Approved secondary weather barrier
<b>Drainage Cavity</b>	Grooved or channeled EPS
<b>Insulation Attachment</b>	Mechanical Fasteners
<b>Base Coat</b>	<ul style="list-style-type: none"> <li>• A/BC</li> <li>• A/BC 1-Step</li> <li>• Finebuild</li> <li>• Fineguard</li> <li>• Quik Base</li> </ul>
<b>Minimum Mesh Requirement</b>	Standard Mesh, 152 g/m <sup>2</sup> (4.5 oz/yd <sup>2</sup> )
<b>Finish</b>	<ul style="list-style-type: none"> <li>• Pebbletex Finish (textured)</li> <li>• Finestone Specialty Finishes</li> <li>• Finemist (spray)</li> </ul> Consult finish brochure or website for all currently available options.
<b>Sealants</b>	Consult system support bulletin: <i>Finestone Approved Sealants</i>
<b>Limited Warranty</b>	7 years
<b>Additional Services Available</b>	<ul style="list-style-type: none"> <li>• Plan/Detail/Specification Reviews</li> <li>• Water vapor transmission analysis</li> </ul>

### **NOTE**

BASF Wall Systems is an operating unit of BASF Construction Chemicals, LLC. (herein after referred to as "BASF Wall Systems")

### **TECHNICAL SUPPORT**

For further details, specifications, questions, specific recommendations, or the most recent product information, please consult the BASF Wall Systems Technical Services Department: Toll-free 800-221-9255 or our website, [www.finestone.basf.com](http://www.finestone.basf.com)

### **DISCLAIMER**

This information and all further technical advice are based on BASF's present knowledge and experience. However, BASF assumes no liability for providing such information and advice including the extent to which such information and advice may relate to existing third party intellectual property rights, especially patent rights. In particular, BASF disclaims all CONDITIONS AND WARRANTIES, WHETHER EXPRESS OR IMPLIED, INCLUDING THE IMPLIED WARRANTIES OF FITNESS FOR A PARTICULAR PURPOSE OR MERCHANTABILITY. BASF SHALL NOT BE RESPONSIBLE FOR CONSEQUENTIAL, INDIRECT OR INCIDENTAL DAMAGES (INCLUDING LOSS OF PROFITS) OF ANY KIND. BASF reserves the right to make any changes according to technological progress or further developments. It is the customer's responsibility and obligation to carefully inspect and test any incoming goods. Performance of the product(s) described herein should be verified by testing and carried out only by qualified experts. It is the sole responsibility of the customer to carry out and arrange for any such testing. Reference to trade names used by other companies is neither a recommendation, nor an endorsement of any product and does not imply that similar products could not be used.

### **RESIDENTIAL POLICY**

On one- and two-family residential framed construction, FINESTONE requires that the wall system selected be one that includes provisions for moisture drainage. The choices include Pebbletex D line of drainage EIFS, FINESTONE Stucco Systems and Finescreen Cement Board Stucco Systems. There are no exceptions to this policy. Under no circumstances will FINESTONE warrant the use of any other system on this type of construction without expressed written authorization from FINESTONE. [Residential construction using EIFS on masonry (CMU) or poured concrete does not require the additional water management provisions described above.] Consult FINESTONE Technical Service Department for specific recommendations concerning all other applications.

### **BASF Wall Systems**

3550 St. Johns Bluff Road South  
Jacksonville, FL 32224-2614  
Phone 800 • 221 • 9255  
Fax 904 • 996 • 6300  
[www.finestone.basf.com](http://www.finestone.basf.com)