

# Pebbletex-D10

Typical details for a water drainage class PB EIFS incorporating a drainage plane and an air/water-resistive barrier.



(THIS PAGE INTENTIONALLY LEFT BLANK)

# Pebbletex-D10

Typical details for a water drainage class PB EIFS incorporating a drainage plane and an air/water-resistive barrier.

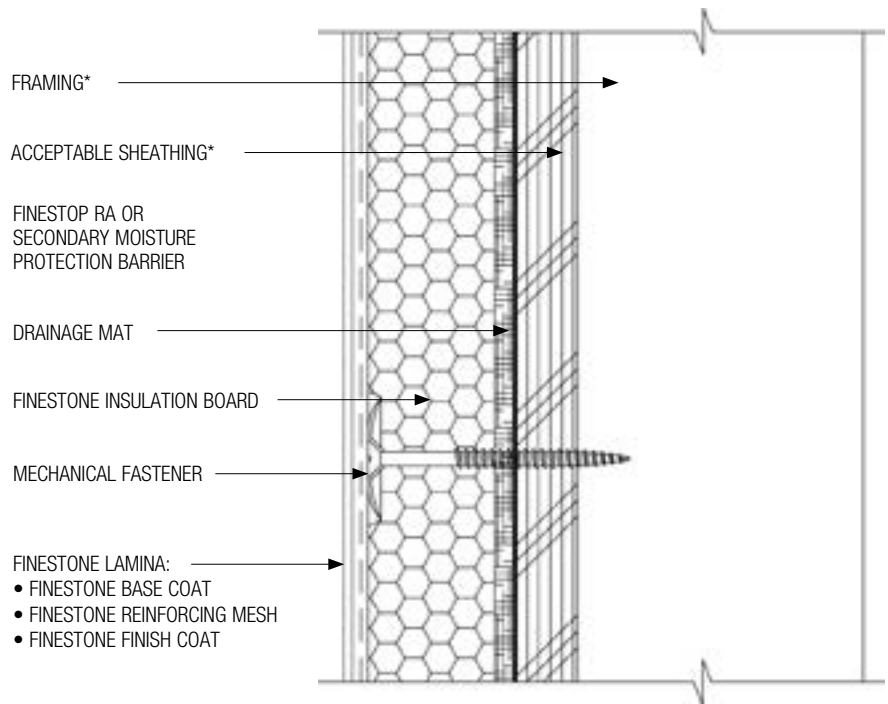
## TABLE OF CONTENTS

1. Pebbletex D-10 Wall System Application (Plan View)	Construction
2. Pebbletex D-10 Wall System Application (Isometric View)	15. Expansion Joint at Change in Substrate (Plan View)
3. Aesthetic Groove (Plan View)	16. Termination at Soffit/Gable End
4. Insulation Boards / Reinforcing Mesh Application at Openings	17. Downspout Application (Plan View)
5. Clad Window Jamb With Aesthetic Band	18. Pipe Penetration
6. Clad Window Head With Aesthetic Band	19. Light Fixture
7. Clad Window Sill With Aesthetic Band	20. Dryer Vent
8. Clad Window Jamb	21. Termination at Top of Deck
9. Clad Window Head	22. Termination at Bottom of Deck
10. Clad Window Sill	23. Termination at Foundation
11. Primed Window Jamb	24. Termination at Foundation
12. Primed Window Head	25. Termination at Brick or Stone
13. Primed Window Sill	26. Termination at Brick or Stone
14. Expansion Joint Detail at Floorline of Wood Frame	27. Kick-out Flashing Detail

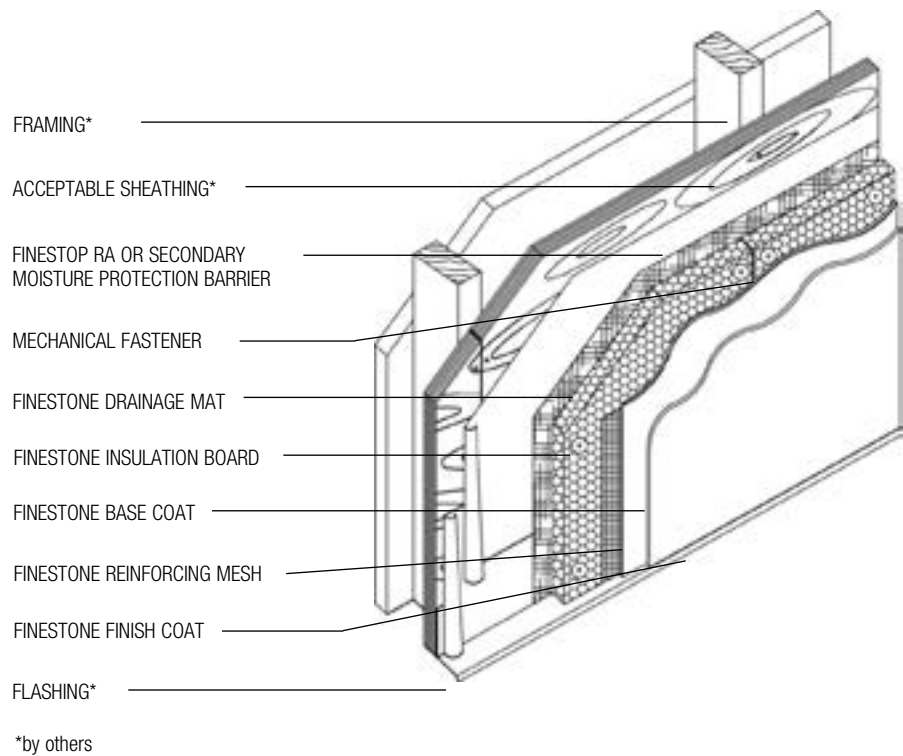
### Notes:

- Install BASF materials in accordance with current installation instructions.
- Unsatisfactory conditions shall be reported to the General Contractor and corrected before the application of BASF products.
- The details within represent BASF Corporation - Wall Systems (hereinafter BASF Wall Systems) latest recommendations. They are presented in good faith by BASF Wall Systems. The details are subject to change without notice. BASF Wall Systems accepts no liability for the end use of the details. For conditions not shown, consult BASF Wall Systems for review of specific detail.

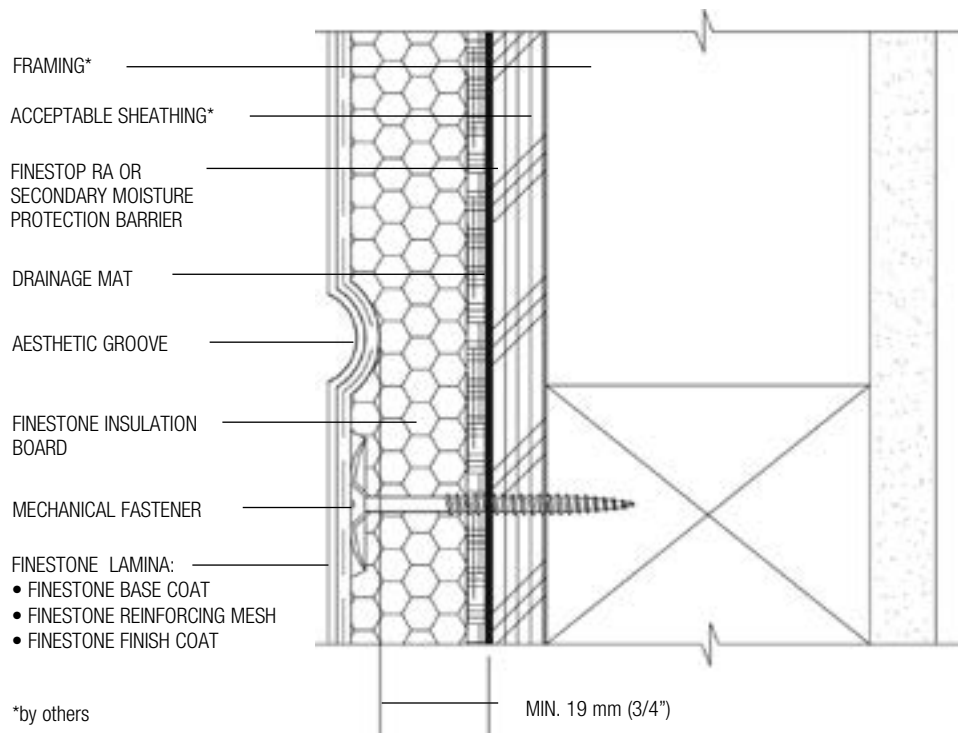




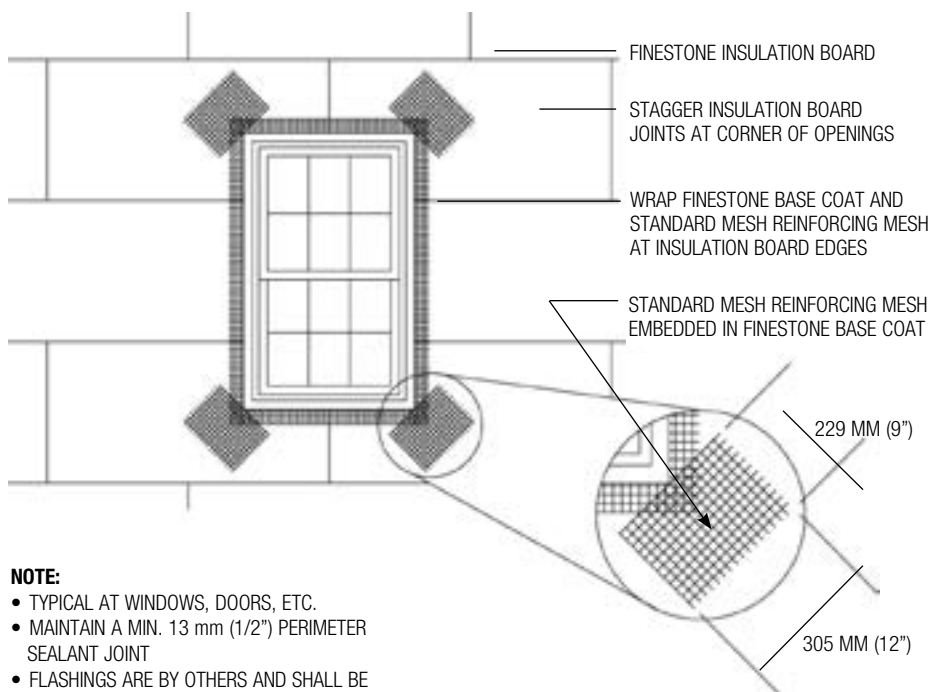
**PD10-01 TYPICAL PEBBLETEX D-10 APPLICATION (PLAN VIEW)**



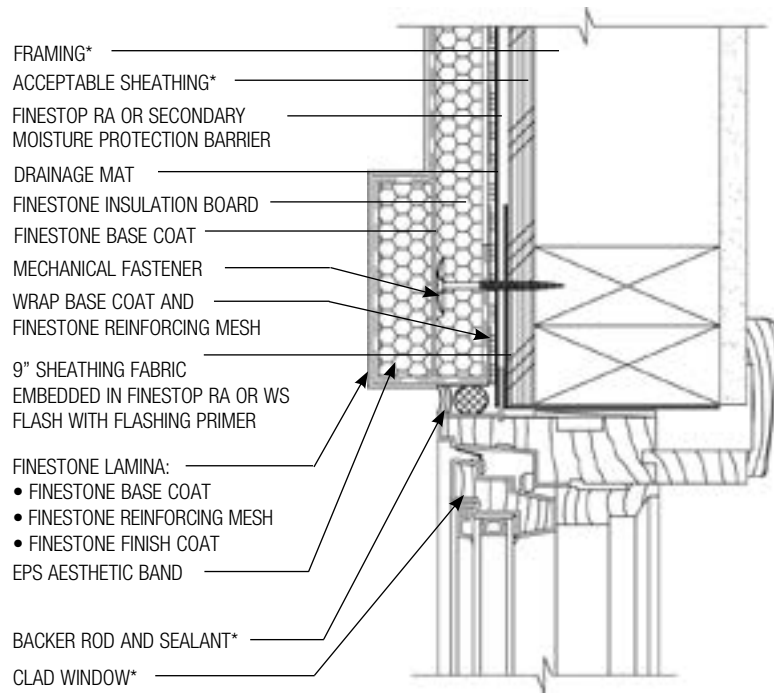
**PD10-02 TYPICAL PEBBLETEX D-10 APPLICATION (ISOMETRIC VIEW)**



**PD10-03 TYPICAL AESTHETIC GROOVE (PLAN VIEW)**

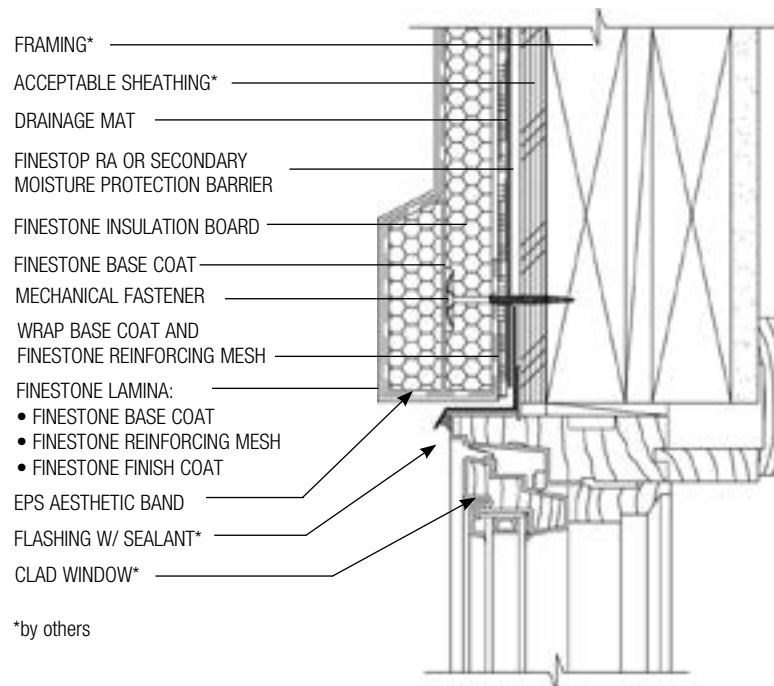


**PD10-04 TYPICAL INSULATION BOARDS/REINFORCING MESH APPLICATION AT OPENINGS**



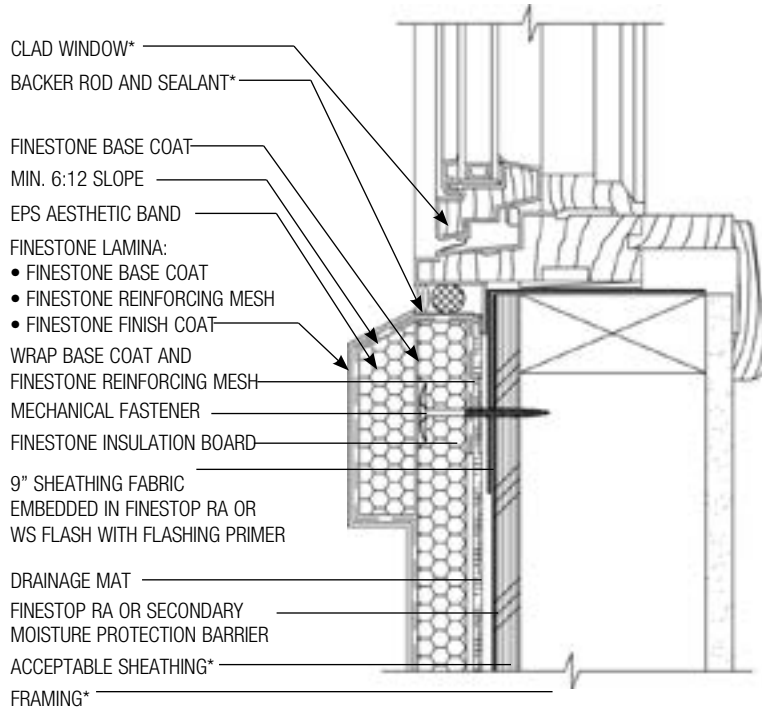
\*by others

**PD10-05 TYPICAL CLAD WINDOW JAMB WITH AESTHETIC BAND**



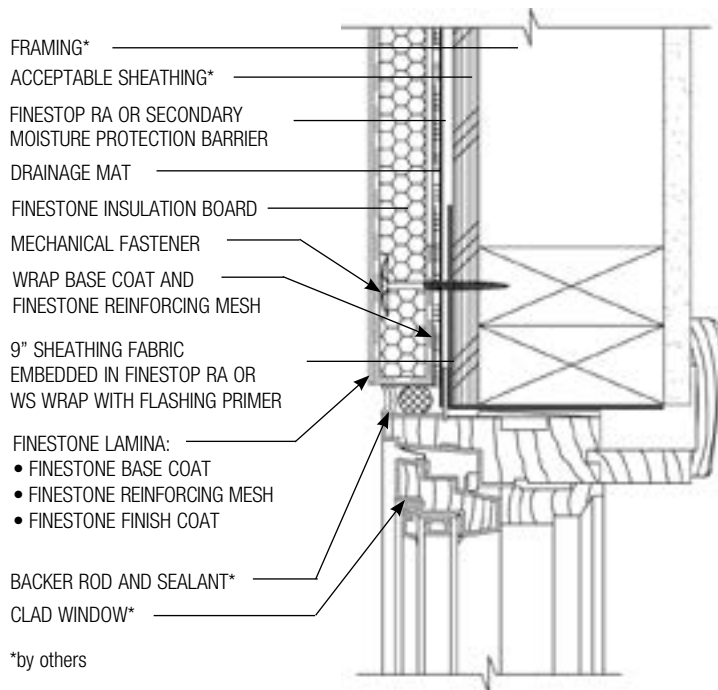
\*by others

**PD10-06 TYPICAL CLAD WINDOW HEAD WITH AESTHETIC BAND**



\*by others

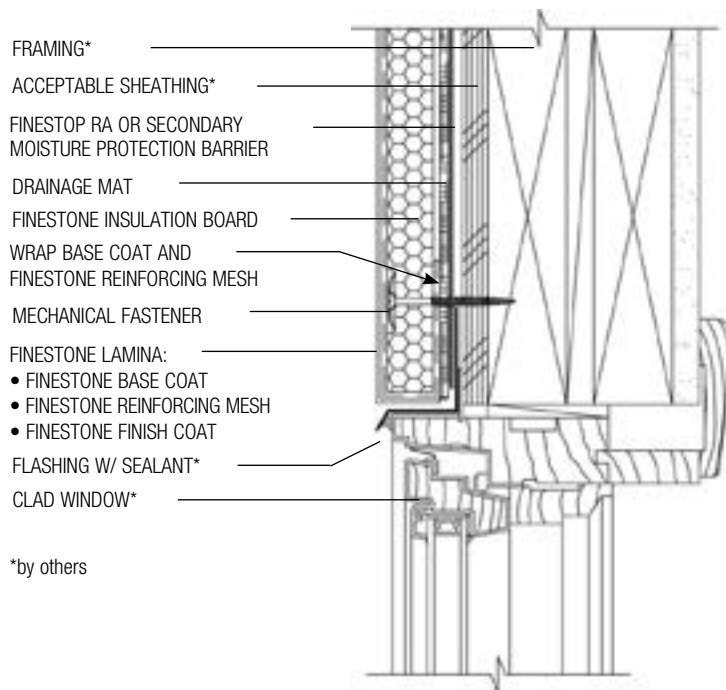
**PD10-07 TYPICAL CLAD WINDOW SILL W/ AESTHETIC BAND**



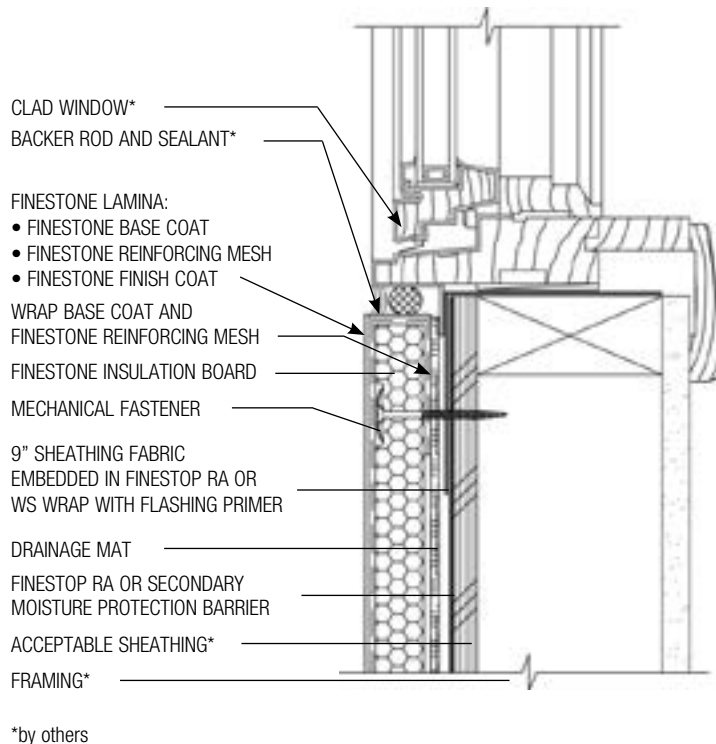
\*by others

**PD10-08 TYPICAL CLAD WINDOW JAMB**

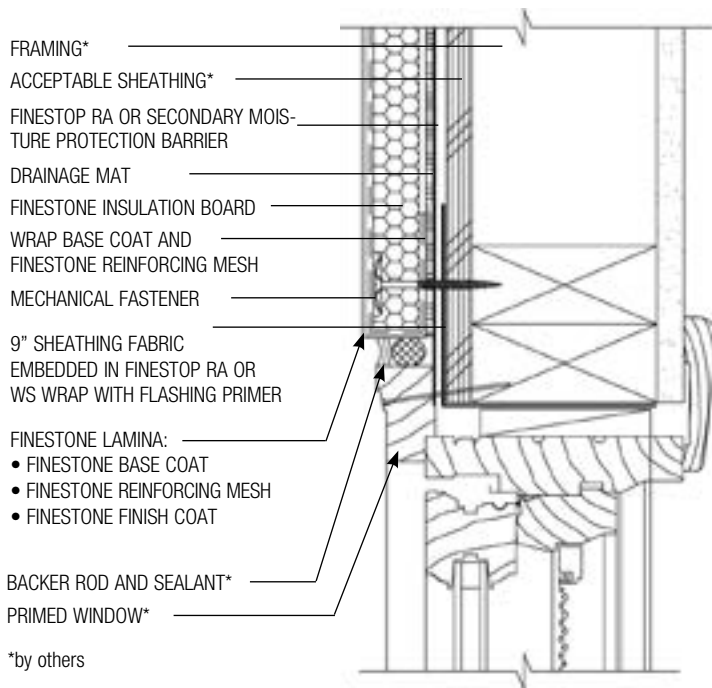




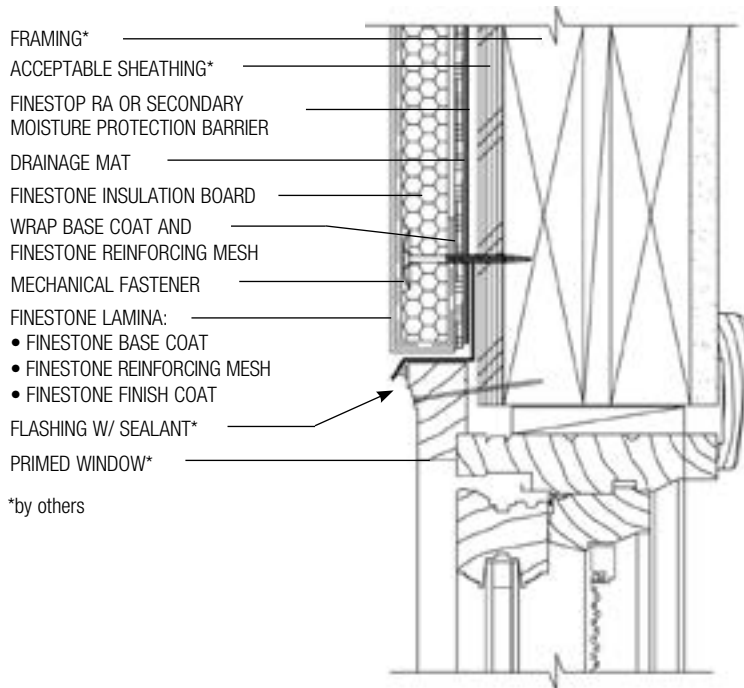
**PD10-09 TYPICAL CLAD WINDOW HEAD**



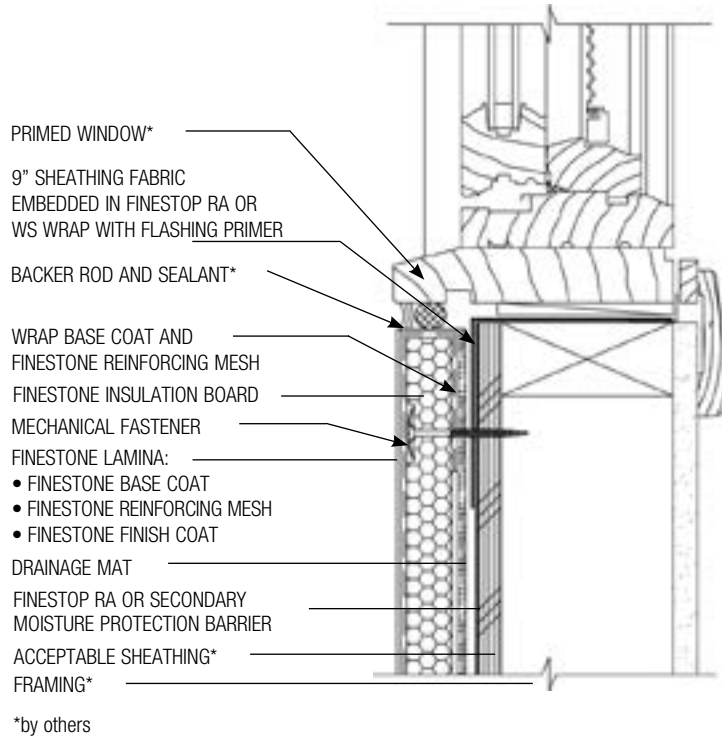
**PD10-10 TYPICAL CLAD WINDOW SILL**



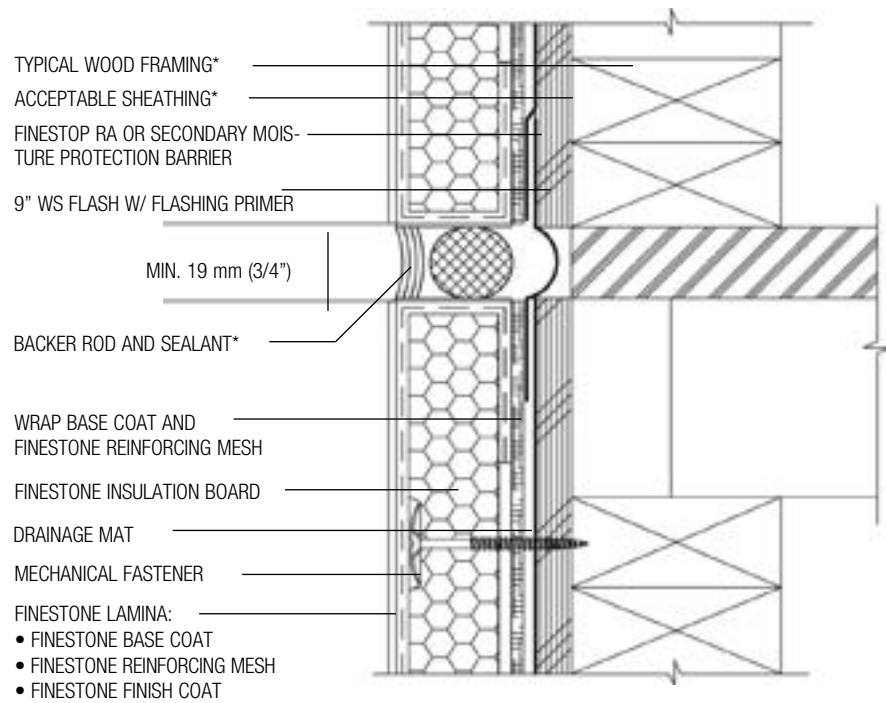
**PD10-11 TYPICAL PRIMED WINDOW JAMB**



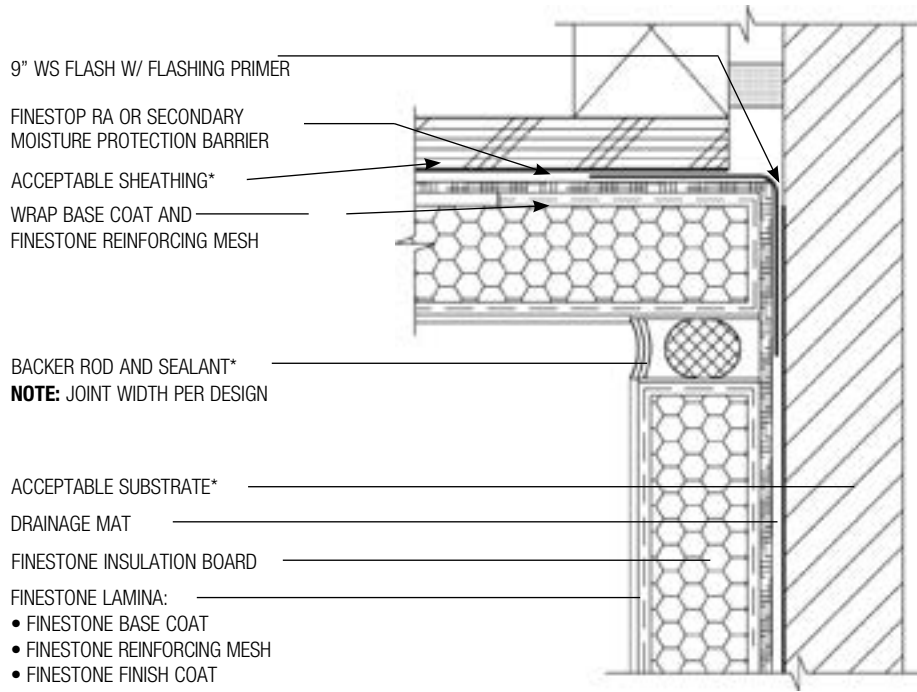
**PD10-12 TYPICAL PRIMED WINDOW HEAD**



**PD10-13 TYPICAL PRIMED WINDOW SILL**

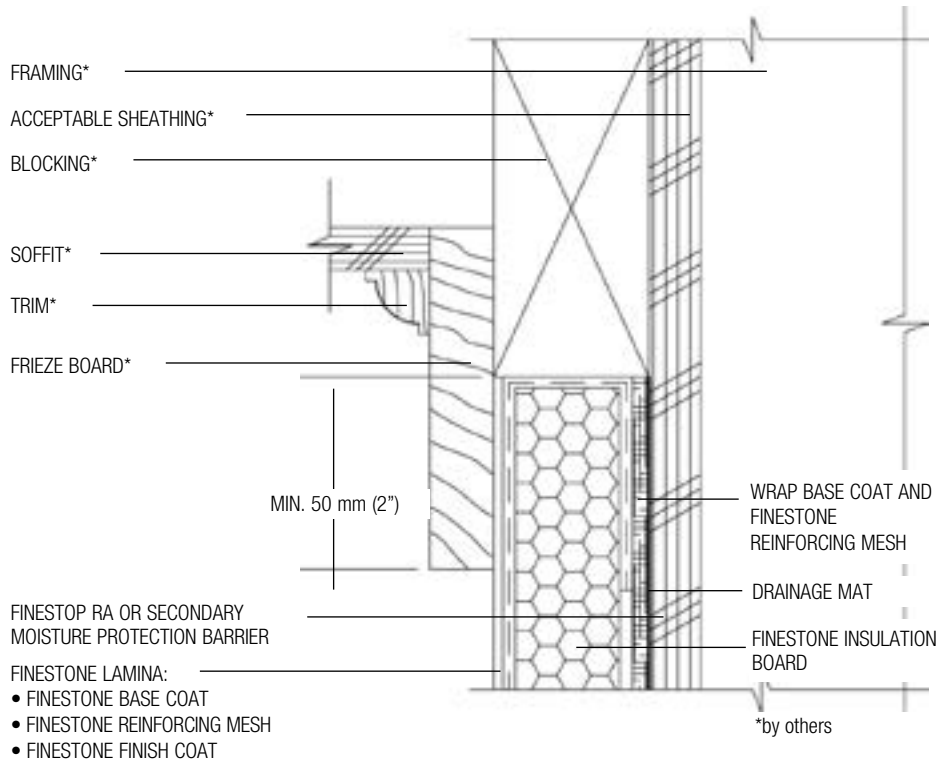


**PD10-14 TYPICAL EXPANSION JOINT DETAIL AT FLOORLINE OF WOOD FRAME CONSTRUCTION**

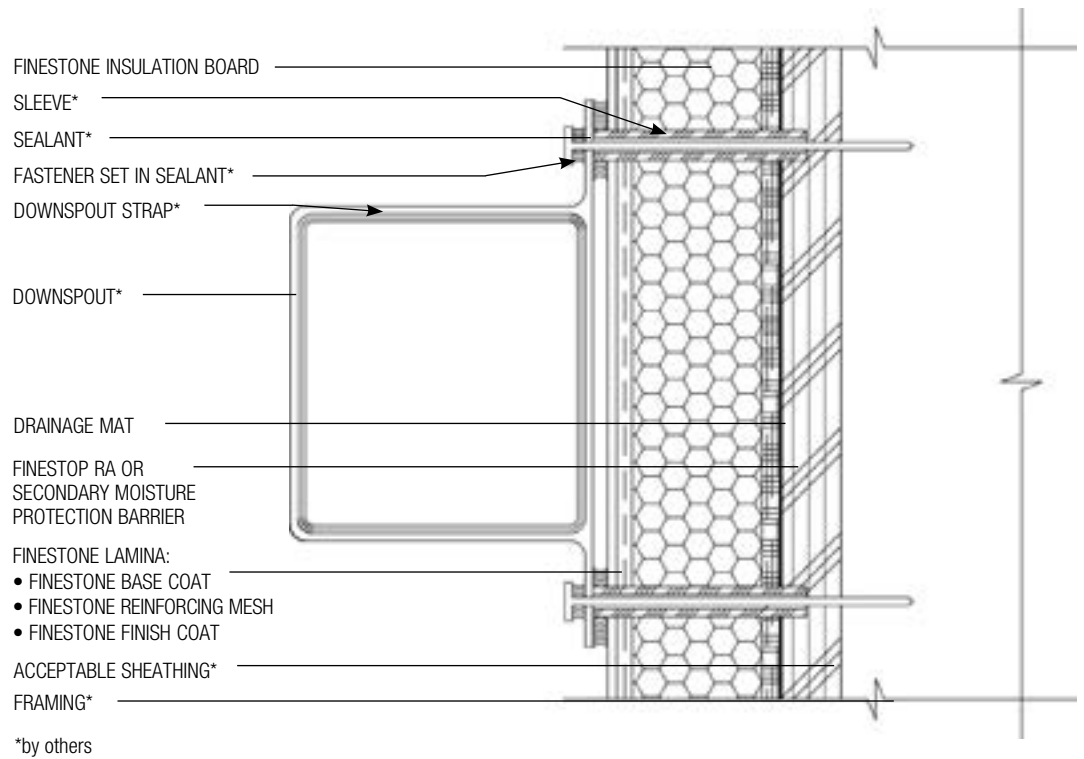


\*by others

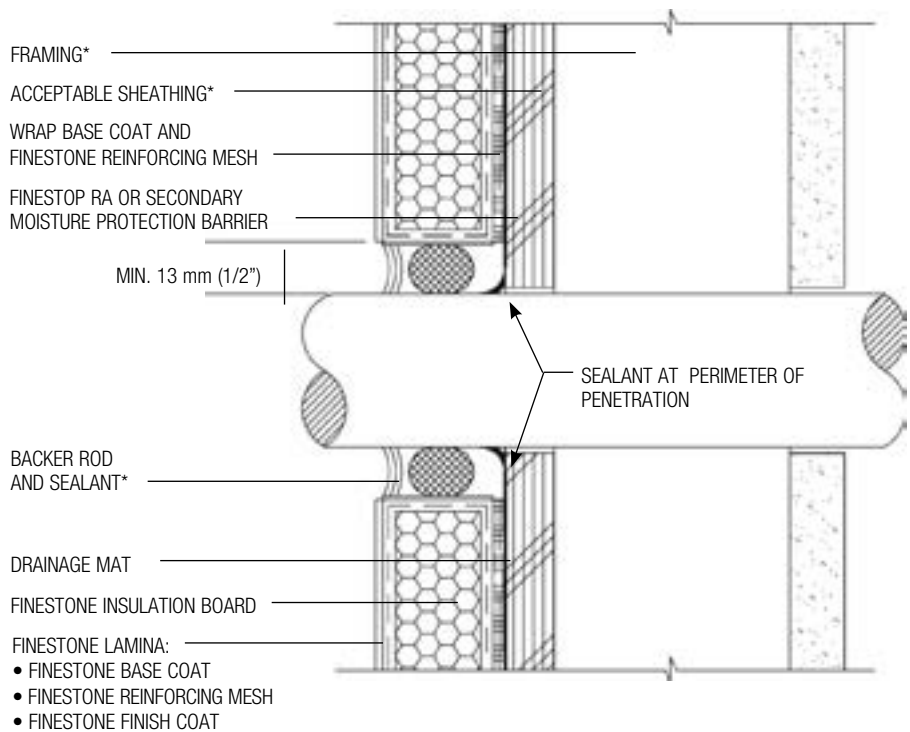
**PD10-15 TYPICAL EXPANSION JOINT AT CHANGE IN SUBSTRATE (PLAN VIEW)**



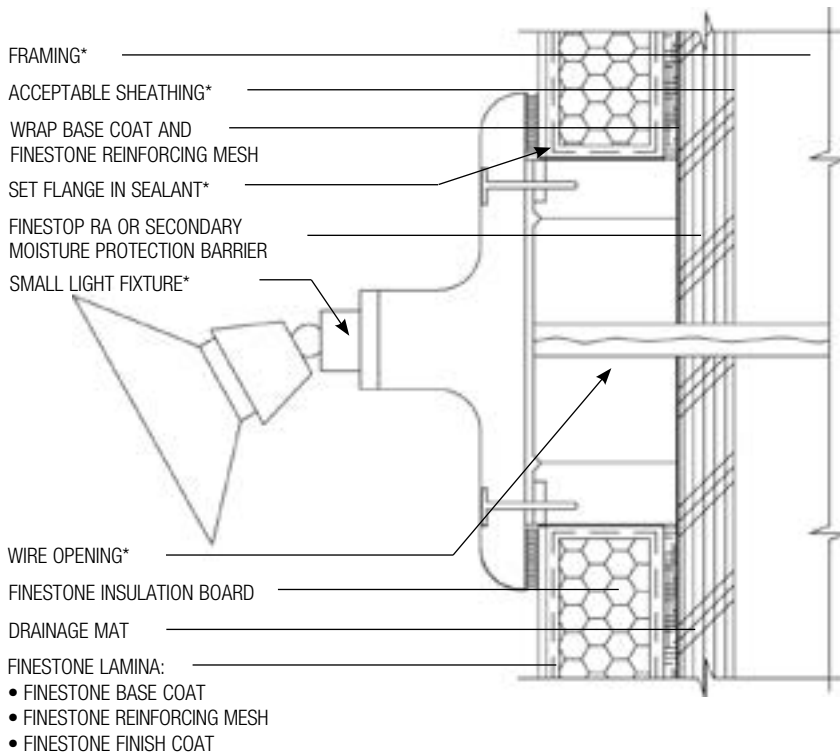
**PD10-16 TYPICAL TERMINATION AT SOFFIT/GABLE END**



**PD10-17 TYPICAL DOWNSPOUT APPLICATION (PLAN VIEW)**

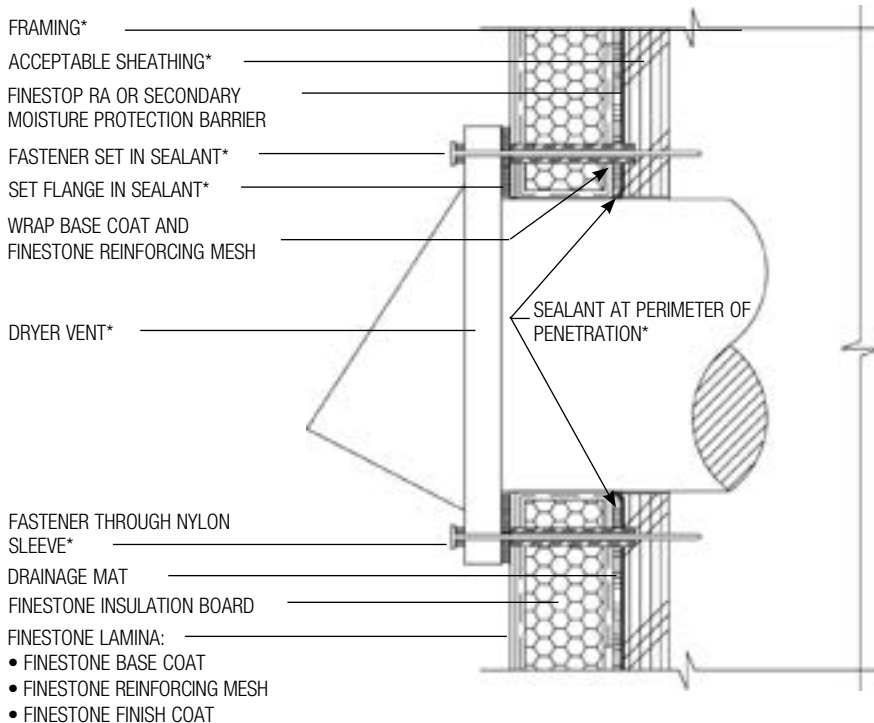


**PD10-18 TYPICAL PIPE PENETRATION**



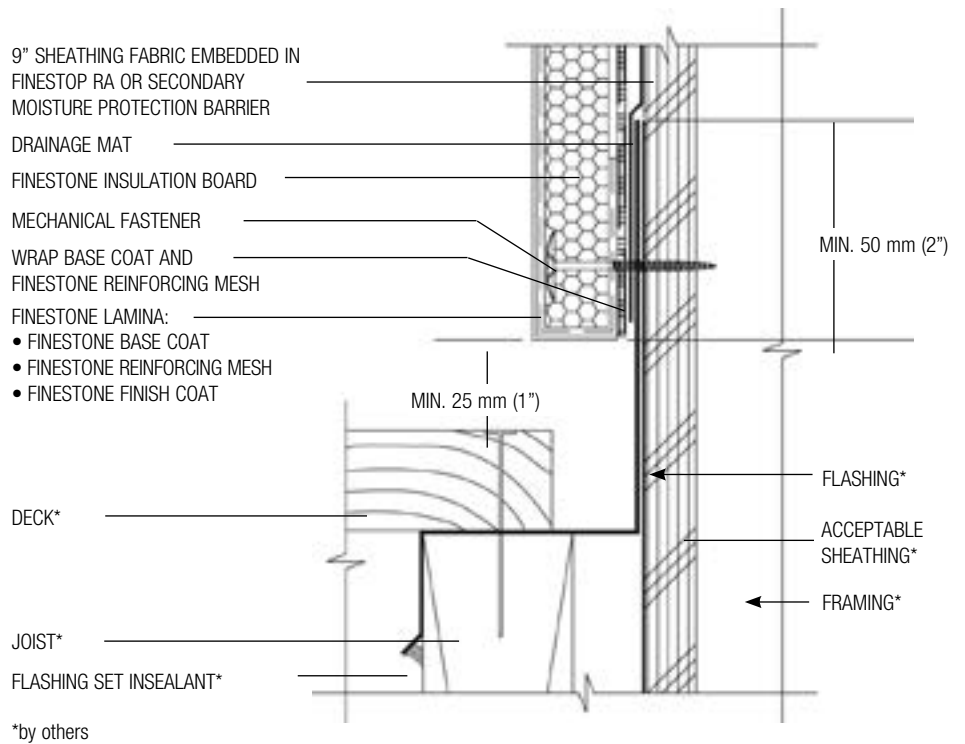
\*by others

**PD10-19 TYPICAL LIGHT FIXTURE**

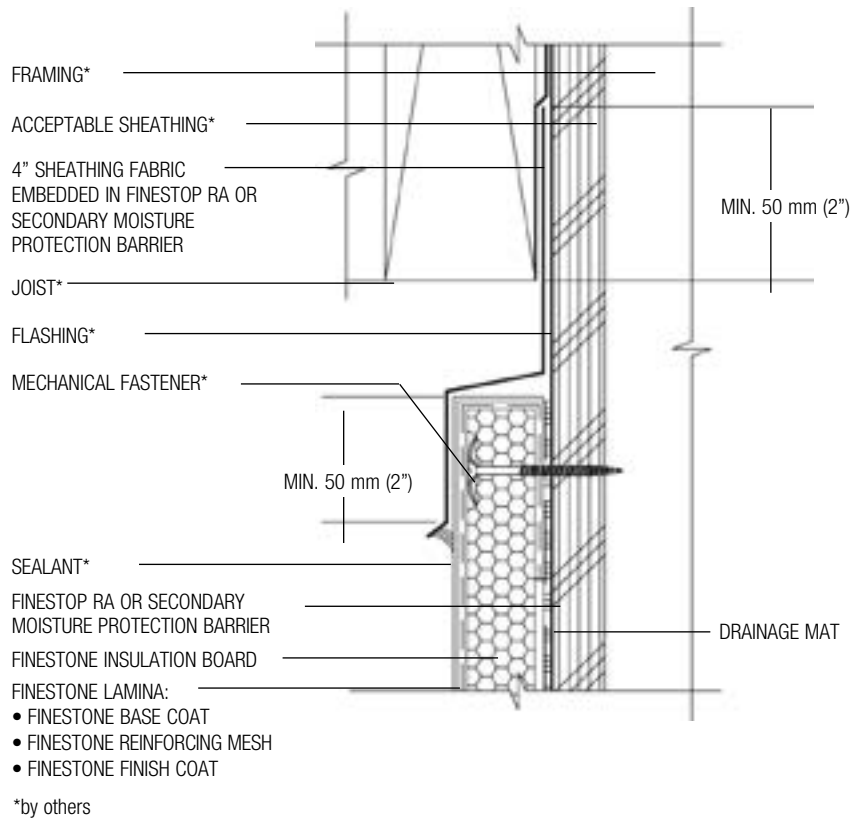


\*by others

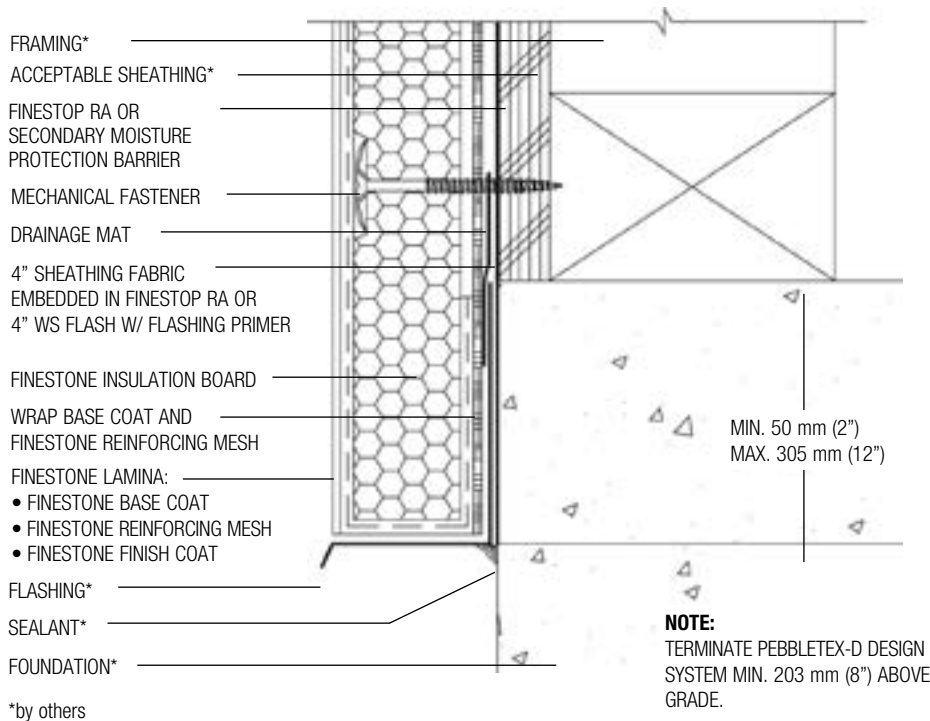
**PD10-20 TYPICAL DRYER VENT**



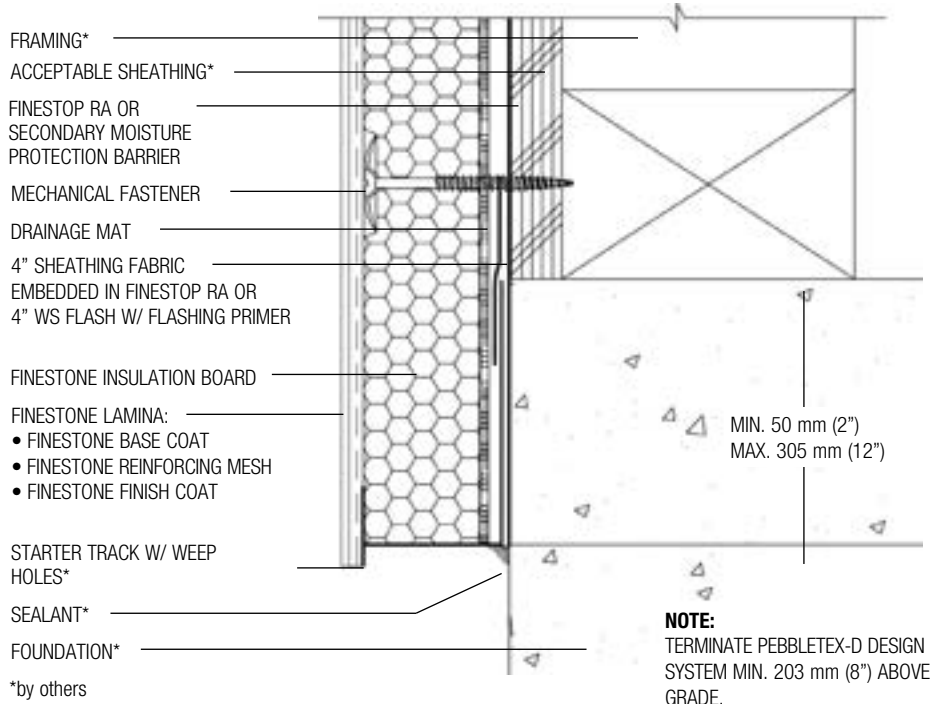
**PD10-21 TYPICAL TERMINATION AT TOP OF DECK**



**PD10-22 TYPICAL TERMINATION AT BOTTOM OF DECK**

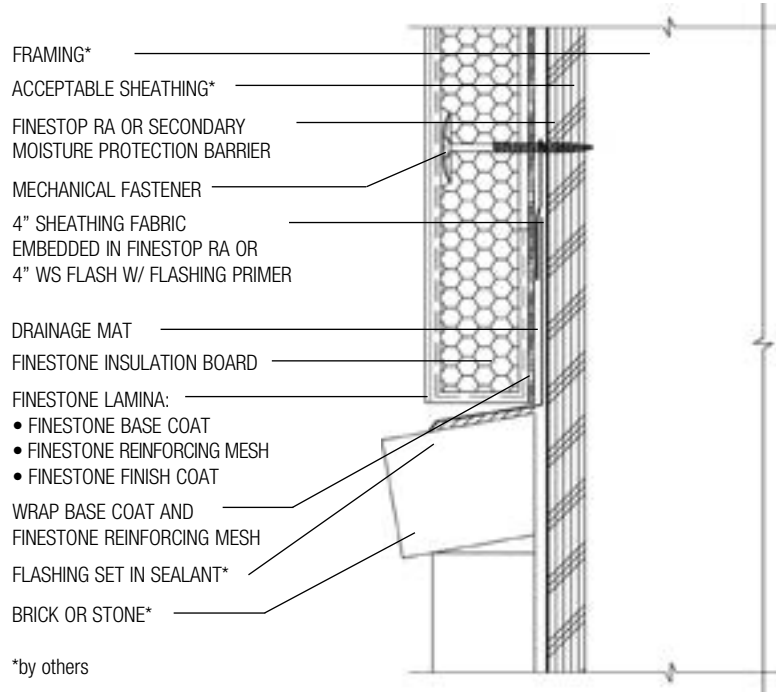


**PD10-23 TYPICAL TERMINATION AT FOUNDATION**

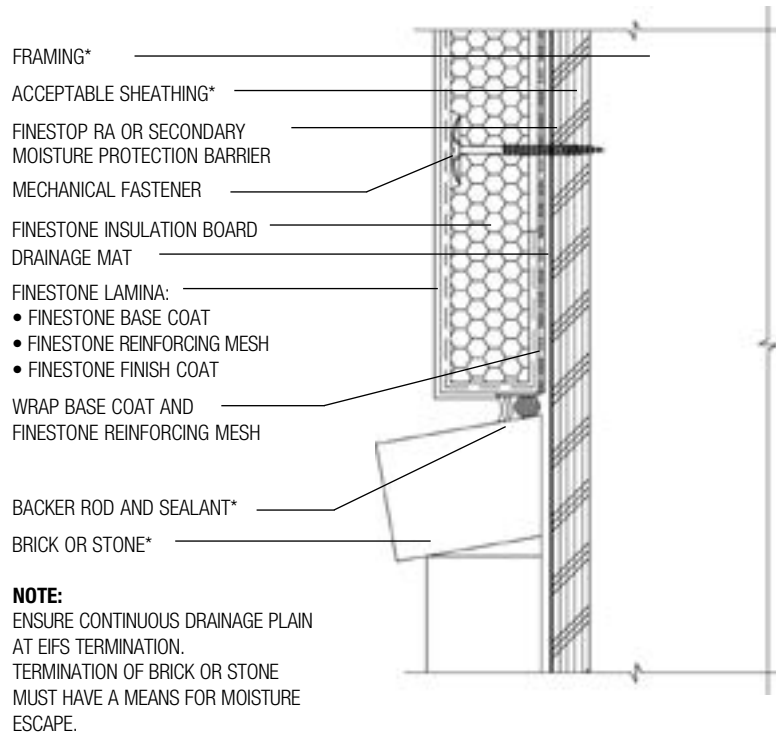


**PD10-24 TYPICAL TERMINATION AT FOUNDATION**

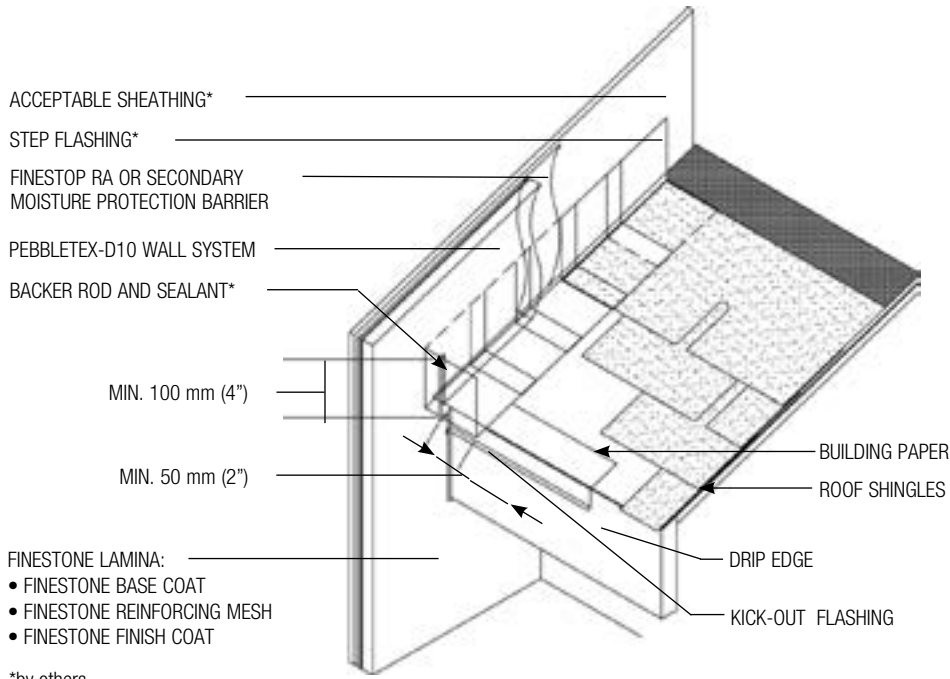




**PD10-25 TYPICAL TERMINATION AT BRICK OR STONE**



**PD10-26 TYPICAL TERMINATION AT BRICK OR STONE**



**NOTE:**

- KICK-OUT FLASHING MUST BE ANGLED 100° MIN. TO ALLOW FOR PROPER DRAINAGE.
- KICK-OUT FLASHING SEAMS MUST BE SOLDERED OR SEALED WITH APPROPRIATE SEALANT.
- TERMINATE PEBBLETEX-D10 WALL SYSTEM MIN. 50 mm (2") ABOVE ROOF.

**PD10-27 TYPICAL KICK-OUT FLASHING DETAIL**

## **NOTES**

**NOTES**

## **NOTES**

## Warranty

BASF warrants this product to be free from manufacturing defects and to meet the technical properties on the current Product Bulletin, if used as directed within shelf life. Satisfactory results depend not only on quality products but also upon many factors beyond our control. BASF MAKES NO OTHER WARRANTY OR GUARANTEE, EXPRESS OR IMPLIED, INCLUDING WARRANTIES OF MERCHANTABILITY OR FITNESS FOR A PARTICULAR PURPOSE WITH RESPECT TO ITS PRODUCTS. The sole and exclusive remedy of Purchaser for any claim concerning this product, including but not limited to, claims alleging breach of warranty, negligence, strict liability or otherwise, is shipment to purchaser of product equal to the amount of product that fails to meet this warranty or refund of the original purchase price of product that fails to meet this warranty, at the sole option of BASF. In the absence of an extended warranty issued by BASF, any claims concerning this product must be received in writing within one (1) year from the date of shipment and any claims not presented within that period are waived by Purchaser. BASF WILL NOT BE RESPONSIBLE FOR ANY SPECIAL, INCIDENTAL, CONSEQUENTIAL (INCLUDING LOST PROFITS) OR PUNITIVE DAMAGES OF ANY KIND.

Purchaser must determine the suitability of the products for the intended use and assumes all risks and liabilities in connection therewith. This information and all further technical advice are based on BASF's present knowledge and experience. However, BASF assumes no liability for providing such information and advice including the extent to which such information and advice may relate to existing third party intellectual property rights, especially patent rights, nor shall any legal relationship be created by or arise from the provision of such information and advice. BASF reserves the right to make any changes according to technological progress or further developments. The Purchaser of the Product(s) must test the product(s) for suitability for the intended application and purpose before proceeding with a full application of the product(s). Performance of the product described herein should be verified by testing and carried out by qualified experts.