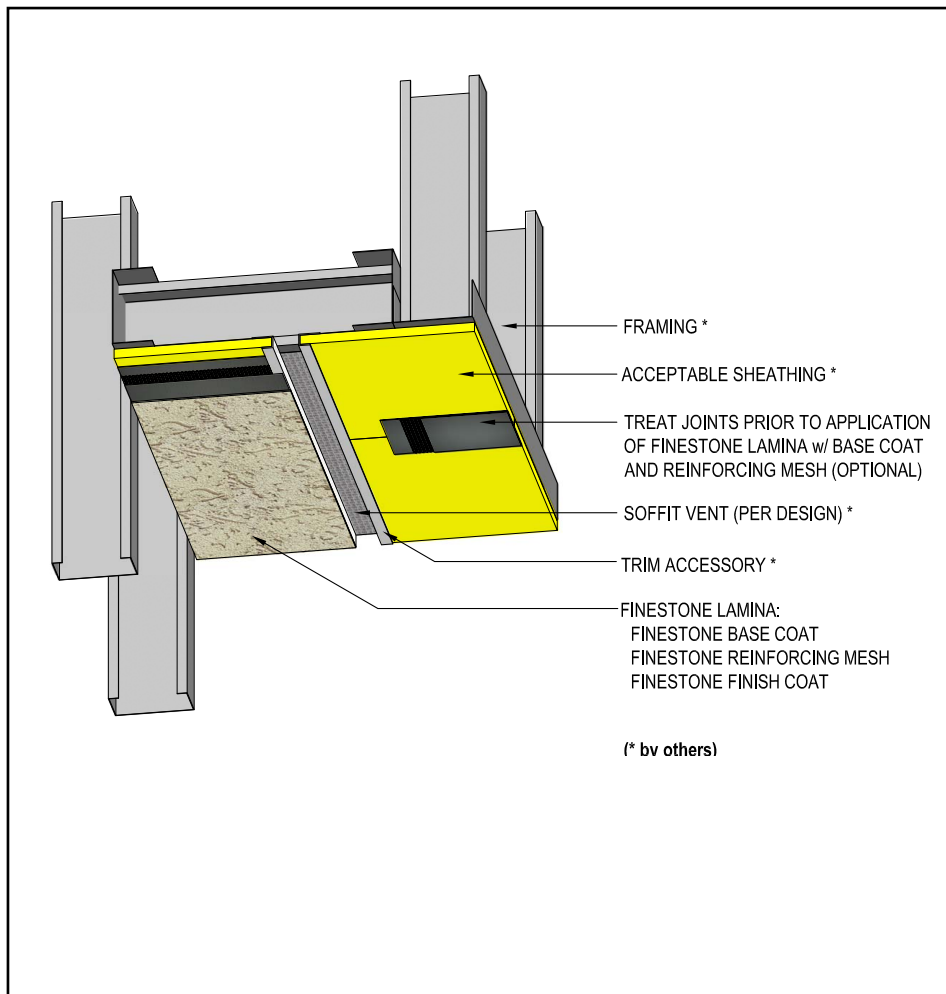


Application on Soffit

DIRECT APPLICATION FOR SOFFITS AND CEILINGS ONLY



- Install BASF materials in accordance with current installation instructions.
- Unsatisfactory conditions shall be reported to the General Contractor and corrected before the application of BASF products.
- Verify all materials are installed in accordance with installation instructions and applicable code.
- Verify substrate is flat, free of fins or planar irregularities greater than 1/4" in 10".
- Treatment of the sheathing joints with mesh reinforced base coat is optional.
- Trim accessory location and type as specified by the design professional.

DA-01 0527

* BY OTHERS

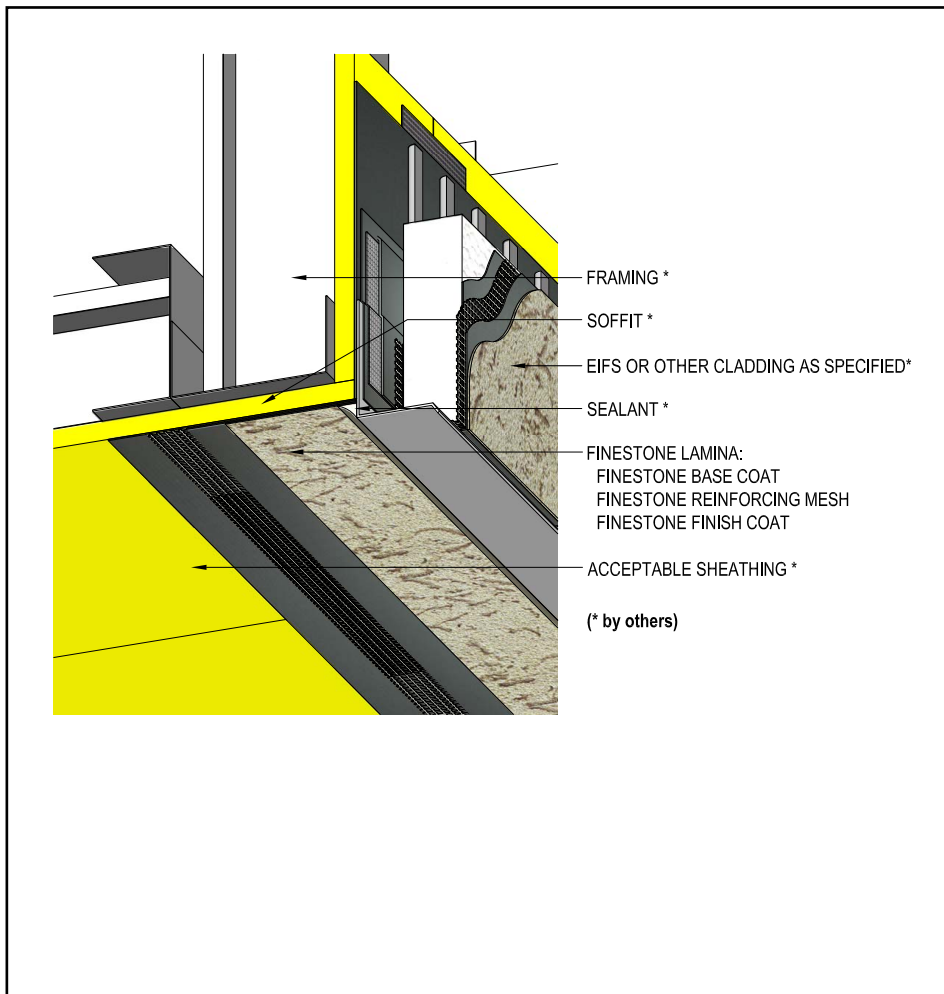
This detail represents BASF Corporation - Wall Systems (hereinafter BASF Wall Systems) latest recommendations. It is presented in good faith by BASF Wall Systems. The detail is subject to change without notice. BASF Wall Systems accepts no liability for the end use of the detail. For conditions not shown, consult BASF Wall Systems for review of specific detail. For the most current version of this literature, please visit our website at www.finestone.basf.com.



BASF
We create chemistry

Application at Soffit / Fascia

DIRECT APPLICATION FOR SOFFITS AND CEILINGS ONLY



- Install BASF materials in accordance with current installation instructions.
- Unsatisfactory conditions shall be reported to the General Contractor and corrected before the application of BASF products.
- Verify all materials are installed in accordance with installation instructions and applicable code.
- Verify substrate is flat, free of fins or planar irregularities greater than 1/4" in 10".
- Install wall system first followed by lamina application at soffit.

DA-02 0527

* BY OTHERS

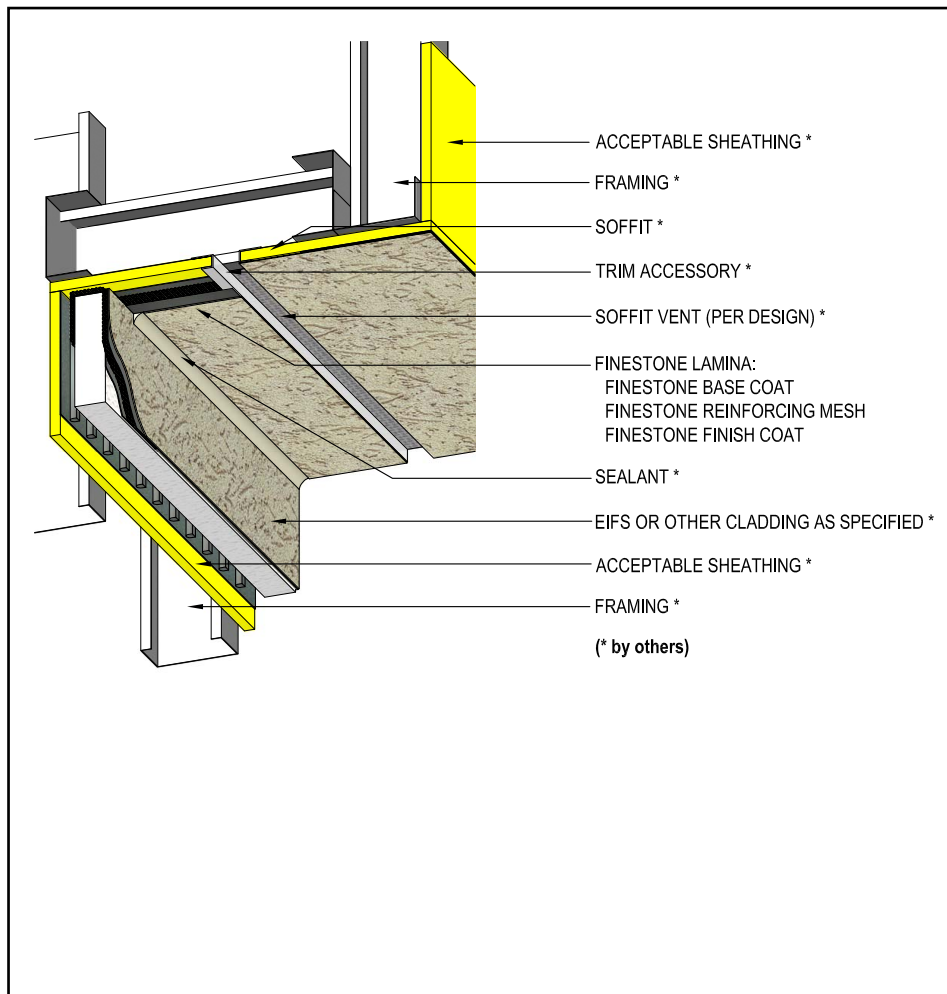
This detail represents BASF Corporation - Wall Systems (hereinafter BASF Wall Systems) latest recommendations. It is presented in good faith by BASF Wall Systems. The detail is subject to change without notice. BASF Wall Systems accepts no liability for the end use of the detail. For conditions not shown, consult BASF Wall Systems for review of specific detail. For the most current version of this literature, please visit our website at www.finestone.basf.com.



BASF
We create chemistry

Wall / Soffit Transition

DIRECT APPLICATION FOR SOFFITS AND CEILINGS ONLY



DA-03 0527

* BY OTHERS

- Install BASF materials in accordance with current installation instructions.
- Unsatisfactory conditions shall be reported to the General Contractor and corrected before the application of BASF products.
- Verify all materials are installed in accordance with installation instructions and applicable code.
- Verify substrate is flat, free of fins or planar irregularities greater than 1/4" in 10".
- Install wall system first followed by lamina application at soffit.
- Trim accessory location & type as specified by the design professional.

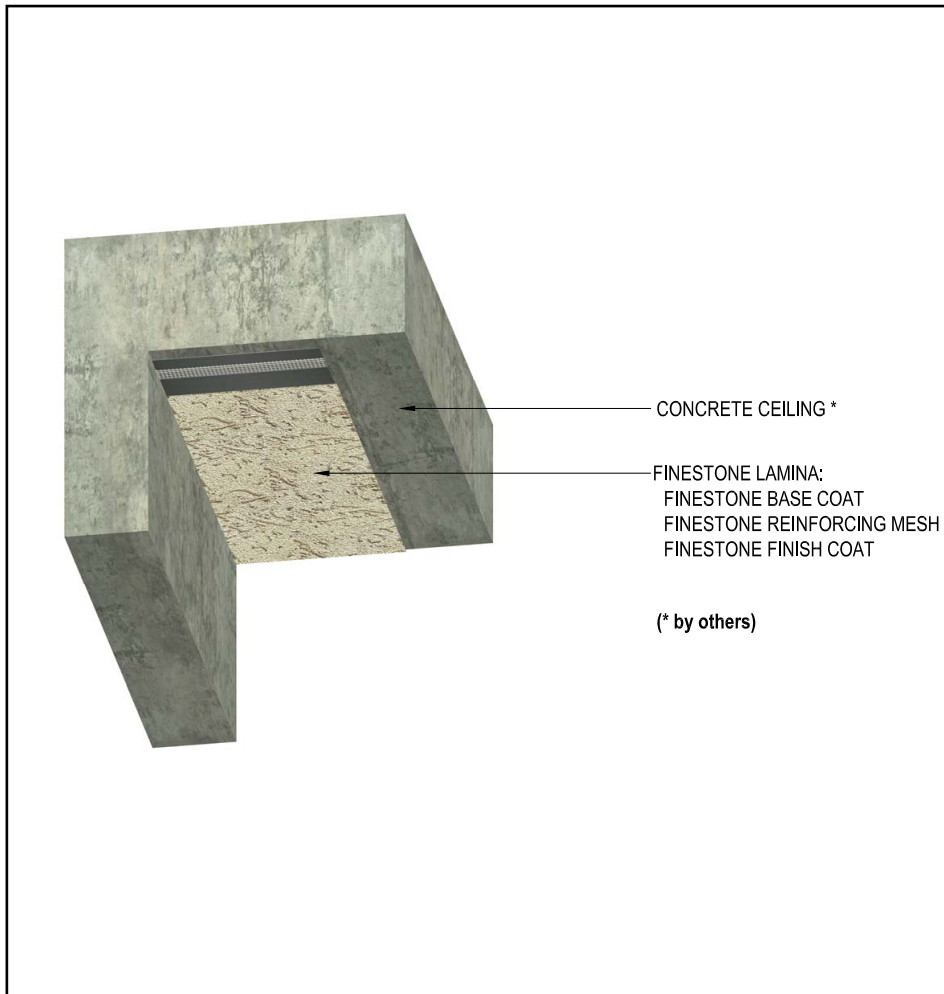
This detail represents BASF Corporation - Wall Systems (hereinafter BASF Wall Systems) latest recommendations. It is presented in good faith by BASF Wall Systems. The detail is subject to change without notice. BASF Wall Systems accepts no liability for the end use of the detail. For conditions not shown, consult BASF Wall Systems for review of specific detail. For the most current version of this literature, please visit our website at www.finestone.basf.com.



We create chemistry

Application on Concrete Ceilings

DIRECT APPLICATION FOR SOFFITS AND CEILINGS ONLY



- Install BASF materials in accordance with current installation instructions.
- Unsatisfactory conditions shall be reported to the General Contractor and corrected before the application of BASF products.
- Verify all materials are installed in accordance with installation instructions and applicable code.
- Verify substrate is flat, free of fins or planar irregularities greater than 1/4" in 10".
- Verify surface is clean and free of all contaminants prior to application

DA-04 0527

* BY OTHERS

This detail represents BASF Corporation - Wall Systems (hereinafter BASF Wall Systems) latest recommendations. It is presented in good faith by BASF Wall Systems. The detail is subject to change without notice. BASF Wall Systems accepts no liability for the end use of the detail. For conditions not shown, consult BASF Wall Systems for review of specific detail. For the most current version of this literature, please visit our website at www.finestone.basf.com.


We create chemistry