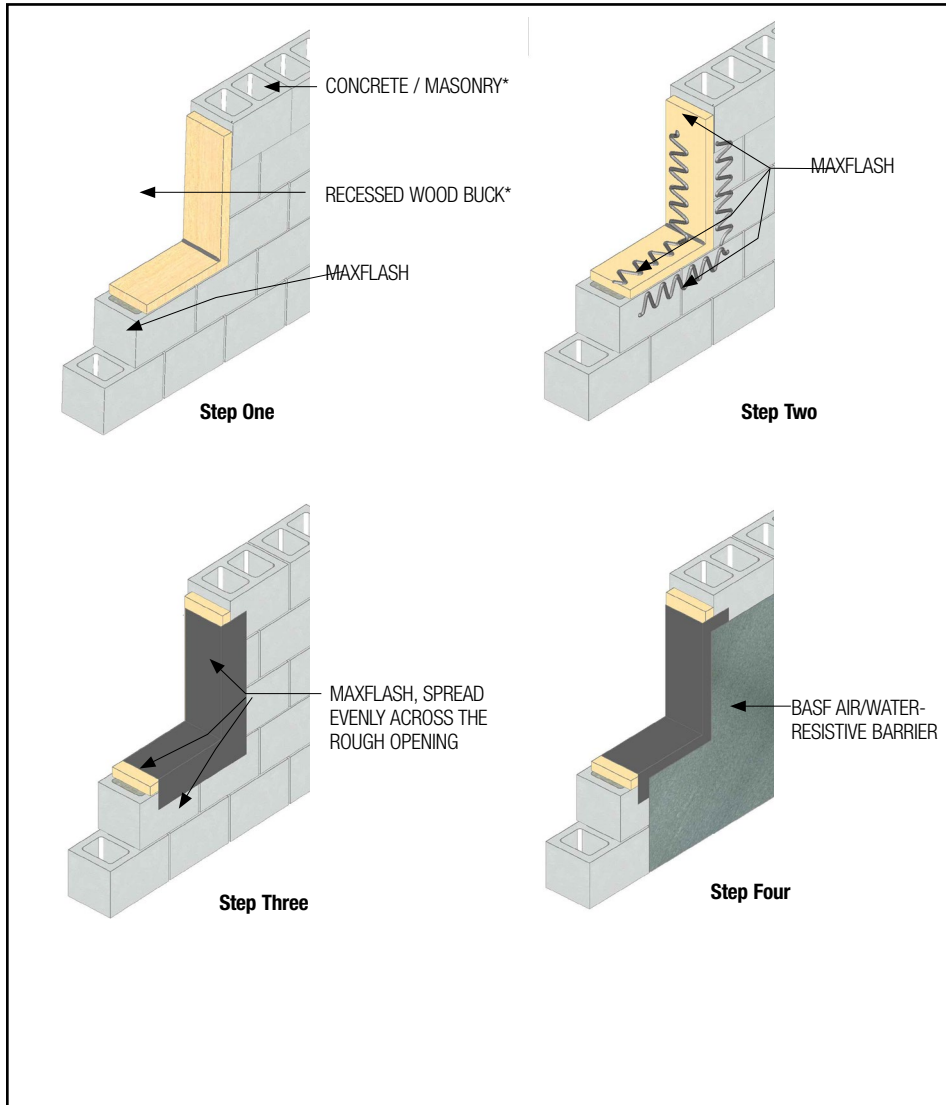


MaxFlash Liquid Flashing Membrane

TYPICAL ROUGH OPENING TREATMENT WITH MAXFLASH ON MASONRY OR CONCRETE CONSTRUCTION WITH FLUSH BUCK



160302-05

* BY OTHERS

- Install BASF materials in accordance with current installation instructions.
- Unsatisfactory conditions shall be reported to the General Contractor and corrected before the application of BASF products.
- Apply a bead of MAXFLASH in each corner of the rough opening.
- Apply additional MAXFLASH in a zigzag pattern onto head, sill, jamba and exterior substrate.
- Spread MAXFLASH evenly across the rough opening to form a uniform, continuous, void- and pinhole-free membrane with a 12-30 mil thickness. Spread MAXFLASH before it skins, typically within 2-3 minutes of application.
- Extend MAXFLASH membrane a minimum of 100mm (4") onto the exterior wall, maintaining 12-30 mil thickness.
- Allow MAXFLASH to skin before applying fluid-applied air/water-resistant barrier to CMU or concrete. Lap air/water-resistant barrier a minimum of 50mm (2") onto MAXFLASH, creating a continuous, monolithic air/water-resistant barrier.
- Allow MAXFLASH to cure before installing windows.

This detail represents BASF Corporation - Wall Systems (hereinafter BASF Wall Systems) latest recommendations. It is presented in good faith by BASF Wall Systems. The detail is subject to change without notice. BASF Wall Systems accepts no liability for the end use of the detail. For conditions not shown, consult BASF Wall Systems for review of specific detail. For the most current version of this literature, please visit our website at www.wallsystems.basf.com.

BASF
We create chemistry