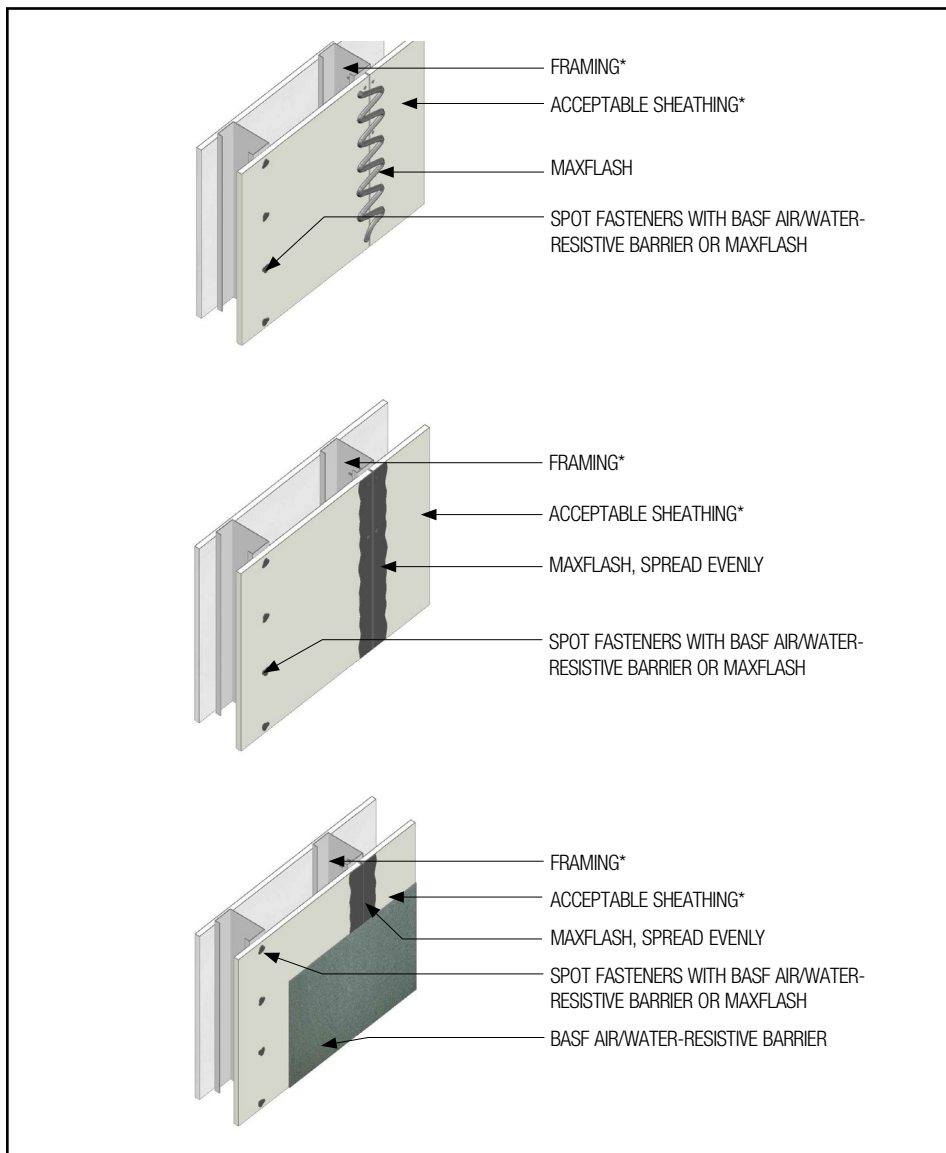


MaxFlash Liquid Flashing Membrane

TYPICAL JOINT AND FASTENER TREATMENT



160302-01

* BY OTHERS

- Install BASF materials in accordance with current installation instructions.
- Unsatisfactory conditions shall be reported to the General Contractor and corrected before the application of BASF products.
- Ensure that MAXFLASH is uniformly applied at 20-30 mils thickness, and extends minimum 1" on either side of sheathing joints.
- Spot all fasteners not at sheathing joints.
- Allow MaxFlash to skin before applying BASF air/water-resistive barrier

This detail represents BASF Corporation - Wall Systems (hereinafter BASF Wall Systems) latest recommendations. It is presented in good faith by BASF Wall Systems. The detail is subject to change without notice. BASF Wall Systems accepts no liability for the end use of the detail. For conditions not shown, consult BASF Wall Systems for review of specific detail. For the most current version of this literature, please visit our website at www.wallsystems.basf.com.

 **BASF**
We create chemistry