

## Acrowall-ES WB

SYSTEM DESCRIPTION

*Class PB EIFS incorporating a primary moisture barrier*

### Description

Highly impact and puncture resistant, water-managed wall system incorporating a cement board core, reinforced base coat and 100% acrylic polymer exterior finish

### Uses

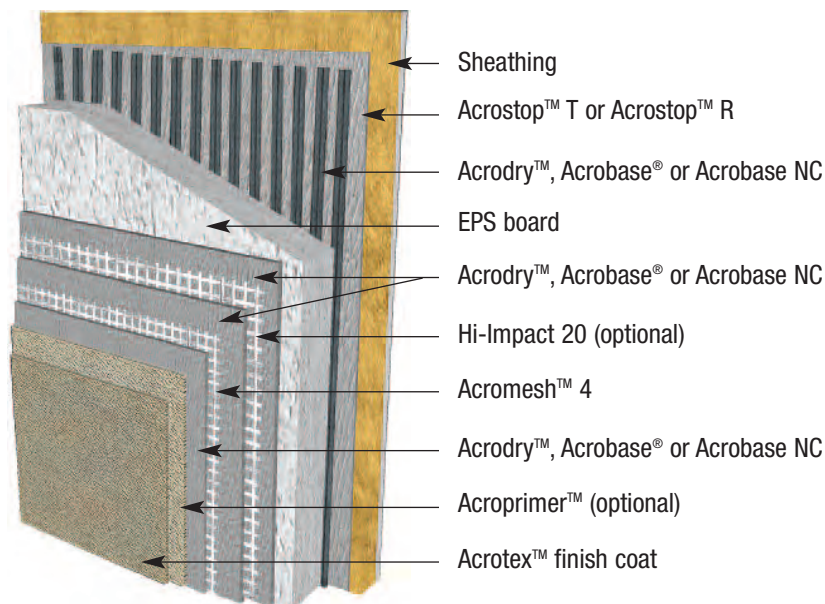
New or retrofit commercial, institutional and residential low-rise construction such as hotels, hospitals, retail, schools, multi-family apartments and condominiums, and government facilities when additional moisture protection of the sheathing is desired.

### Advantages

- Economical
- Adapts to most architectural styles
- The most affordable detailing possible with any wall cladding system
- Protect sheathing
- Guards against moisture intrusion and air infiltration
- Wide color and texture choices
- Reduces building's heating and cooling costs
- Allows downsized HVAC systems
- Low maintenance
- Fade-, crack-, abrasion- and dirt-resistant

### Key Upgrades Available:

- INTERMEDIATE and HI-IMPACT Reinforcing Mesh
- ACROPRIMER<sup>™</sup> finish color enhancement
- Specialty finishes



---

**NOTE**

BASF Wall Systems is an operating unit of BASF Construction Chemicals, LLC. (herein after referred to as "BASF Wall Systems")

**RESIDENTIAL POLICY**

On one and two-family residential framed construction, BASF Wall Systems requires that the wall system selected be one that includes provisions for management of incidental moisture. The choices include water-managed EIFS, Acrowall-CP, and Acrowall-CBS. Acrowall Surfacing Systems for insulating concrete forms are also acceptable. There are no exceptions to this policy. Under no circumstances will BASF Wall Systems warrant the use of any other system on this type of construction without expressed written permission from BASF Wall Systems [Residential construction using EIFS on masonry (CMU) or poured concrete does not require the additional water management provisions described above.] Consult BASF Wall Systems' Technical Services Department for specific recommendations concerning all other applications. Consult the Acrocrete web-site, [www.acrocrete.com](http://www.acrocrete.com) for additional information about products and systems and for updated literature.

**DISCLAIMER**

This information and all further technical advice are based on BASF's present knowledge and experience. However, BASF assumes no liability for providing such information and advice including the extent to which such information and advice may relate to existing third party intellectual property rights, especially patent rights. In particular, BASF disclaims all CONDITIONS AND WARRANTIES, WHETHER EXPRESS OR IMPLIED, INCLUDING THE IMPLIED WARRANTIES OF FITNESS FOR A PARTICULAR PURPOSE OR MERCHANTABILITY. BASF SHALL NOT BE RESPONSIBLE FOR CONSEQUENTIAL, INDIRECT OR INCIDENTAL DAMAGES (INCLUDING LOSS OF PROFITS) OF ANY KIND. BASF reserves the right to make any changes according to technological progress or further developments. It is the customer's responsibility and obligation to carefully inspect and test any incoming goods. Performance of the product(s) described herein should be verified by testing and carried out only by qualified experts. It is the sole responsibility of the customer to carry out and arrange for any such testing. Reference to trade names used by other companies is neither a recommendation, nor an endorsement of any product and does not imply that similar products could not be used.