

MASTER®
» BUILDERS
SOLUTIONS



— MasterKure®

**Making the Difference
to Concrete Performance
and Durability**

Master Builders Solutions®

As Master Builders Solutions®, we are a leading global producer of responsible solutions for the construction industry, focussed on delivering our vision: **Inspiring people to build better.**

We provide value-added technology and market-leading R&D capabilities to improve the performance of construction materials and to enable the reduction of CO₂ emissions in the production of concrete. The comprehensive portfolio under the Master Builders Solutions® brand encompasses concrete admixtures, cement additives, and solutions for underground construction.

We collaborate across areas of expertise and regions and draw on the experience gained from countless construction projects worldwide, leveraging global technologies, as well as our in-depth knowledge of local building needs, to develop innovations that help make you more successful and drive sustainable construction.

Founded in 1909, Master Builders Solutions® operates 35 production sites globally, supporting you in mastering your building challenges of today and tomorrow – for a decarbonised future.



MasterKure®

Comprehensive Solutions for all Areas of the Concrete Industry

Benefits

The Master Builders Solutions® experts have developed an innovative range of curing compounds for all segments of the concrete industry.

- Innovative products including waterbased emulsions, pigmented curing compounds with high solar reflectance and solvent-dissolved products for immediate membrane formation in order to ensure maximum durability of the concrete.
- Superior expertise based on long-term know-how in the combined application of concrete admixtures and curing compounds.
- Value added service for specification development and optimization of concrete mix design.

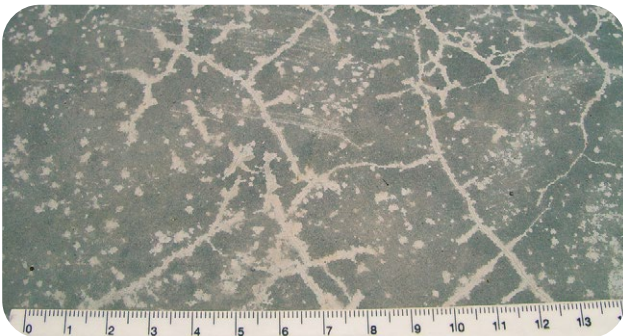


Environment

The best concrete design is worthless if the surface is not dense, durable and crack-free. The surface of freshly placed concrete is its weakest point and needs to be protected to achieve its full quality potential. This is especially important for modern, high performance concrete with low water /cement ratios.

To this end, Master Builders Solutions® offers a comprehensive range of high-grade curing compounds. Liquid membrane-forming curing compounds for the construction industry have many advantages over traditional curing procedures such as plastic sheets or water spray. Their requirements differ depending on climatic conditions and the regulations of the country in which they are used. Furthermore, each market segment demands that curing compounds demonstrate different features depending on the needs of the application.

Early age cracks by drying shrinkage



Requirements

Our MasterKure® range meets all the different requirements of the market. The key feature of a curing compound is water retention, and the need for high water retention is shared by all users of curing compounds. Additional requirements need to be met for different applications, depending on the market segment.

A contractor needs good adhesion on vertical surfaces and expects a curing compound to be able to act as a primer system for subsequent surface finishes. The flooring market requires an easily removable curing film in order to obtain a high substrate bond for subsequent coatings. On road construction sites, the reduction of temperature increases in concrete exposed to intense sunlight is an important demand.

Technologies

The Master Builders Solutions® experts offer a comprehensive range of curing compounds. An evaporation reducer is recommended to ensure full hydration during the first few hours and to facilitate trowelling. Low emission curing compounds based on aqueous wax emulsions are extremely efficient, environmentally friendly and economical in use. White pigmented curing compounds serve the additional purpose of reducing temperature increases in concrete exposed to radiation from the sun. For high efficiency combined with early application and fast membrane formation, a product based on polymer resins dissolved in organic solvent offers the ideal solution.



MasterKure® application on construction site after placing the concrete

MasterKure® selection matrix

	MasterKure® III WB	MasterKure® II4 SB	MasterKure® 2I6 WB	MasterKure® 220 WB	MasterKure® 270 WB
Application on					
Fresh concrete	•	•			
Matt dry concrete ¹⁾		•	•	•	•
Newly hardened/demoulded concrete		•	•	•	
Water retention					
Excellent		•	•		•
Good	•			•	
Membrane forming					
Fast	•	•			
Standard			•	•	•
Key advantages					
Improved surface quality		•	•	•	•
Subsequent surface finishes ²⁾		•		•	
Reduced temperature rise in concrete					•
Evaporation reducer/trowelling aid	•				
Removable by					
Shotblasting		•		•	
Pressure washing			•		•
Standards & Regulations					
ASTM C 309-03 (US)		•			
AFNOR NF P 18-370 (FR)		•			
TL NBM-StB 09 (DE)			•		•
SILKO-directions (FIN)			•		
Description					
Polymer resin dispersion		•		•	
Paraffin wax emulsion			•		•
Surfactant	•				
White pigmented					•
Waterbased	•		•	•	•

1) Ensure that no free water is present and that the initial surface sheen has disappeared from the concrete surface.

2) Bond is maintained with tile adhesives, paint systems and cementitious systems.

Master Builders Solutions® for the Construction Industry

MasterAir®

Complete solutions for air
entrained concrete

MasterCast®

Solutions for the manufactured
concrete product industry

MasterCem®

Solutions for cement manufacture

MasterCO₂re™

Solutions for low-clinker concrete

MasterEase®

Low viscosity for high
performance concrete

MasterFinish®

Solutions for formwork treatment
and surface improvement

MasterFiber®

Comprehensive solutions
for fiber reinforced concrete

MasterGlenium®

Solutions for high performance
concrete

MasterKure®

Solutions for concrete curing

MasterLife®

Solutions for enhanced durability

MasterMatrix®

Advanced rheology control
for concrete

MasterPel®

Solutions for hydrophobization,
anti-efflorescence and surface
protection

MasterPolyheed®

Solutions for mid-range concrete

MasterPozzolith®

Solutions for water-reduced
concrete

MasterRheobuild®

Solutions for high strength concrete

MasterRoc®

Solutions for underground
construction and surface
improvement

MasterSet®

Solutions for set control

MasterSphere®

Solutions for guaranteed
freeze-thaw resistance

MasterSuna®

Solutions for sand
and gravel in concrete

MasterSure®

Solutions for extraordinary
workability retention

Master X-Seed®

Advanced accelerator
solutions for concrete

Unveil the Power of MasterCO₂re™: Intelligent Cluster System for Low-clinker Concrete Production

info.master-builders-solutions.com/en/masterco2re

**Master Builders Solutions UK Ltd**

Swinton Hall Road, Swinton,
Manchester, M27 4EU
T +44 161 727 6300

ukinfo@masterbuilders.com

www.master-builders-solutions.com

The data contained in this publication are based on our current knowledge and experience. They do not constitute the agreed contractual quality of the product and, in view of the many factors that may affect processing and application of our products, do not relieve processors from carrying out their own investigations and tests. The agreed contractual quality of the product at the time of transfer of risk is based solely on the data in the specification data sheet. Any descriptions, drawings, photographs, data, proportions, weights, etc. given in this publication may change without prior information. It is the responsibility of the recipient of our product to ensure that any proprietary rights and existing laws and legislation are observed (12/2023).

® registered trademark of Master Builders Solutions® in many countries of the world

